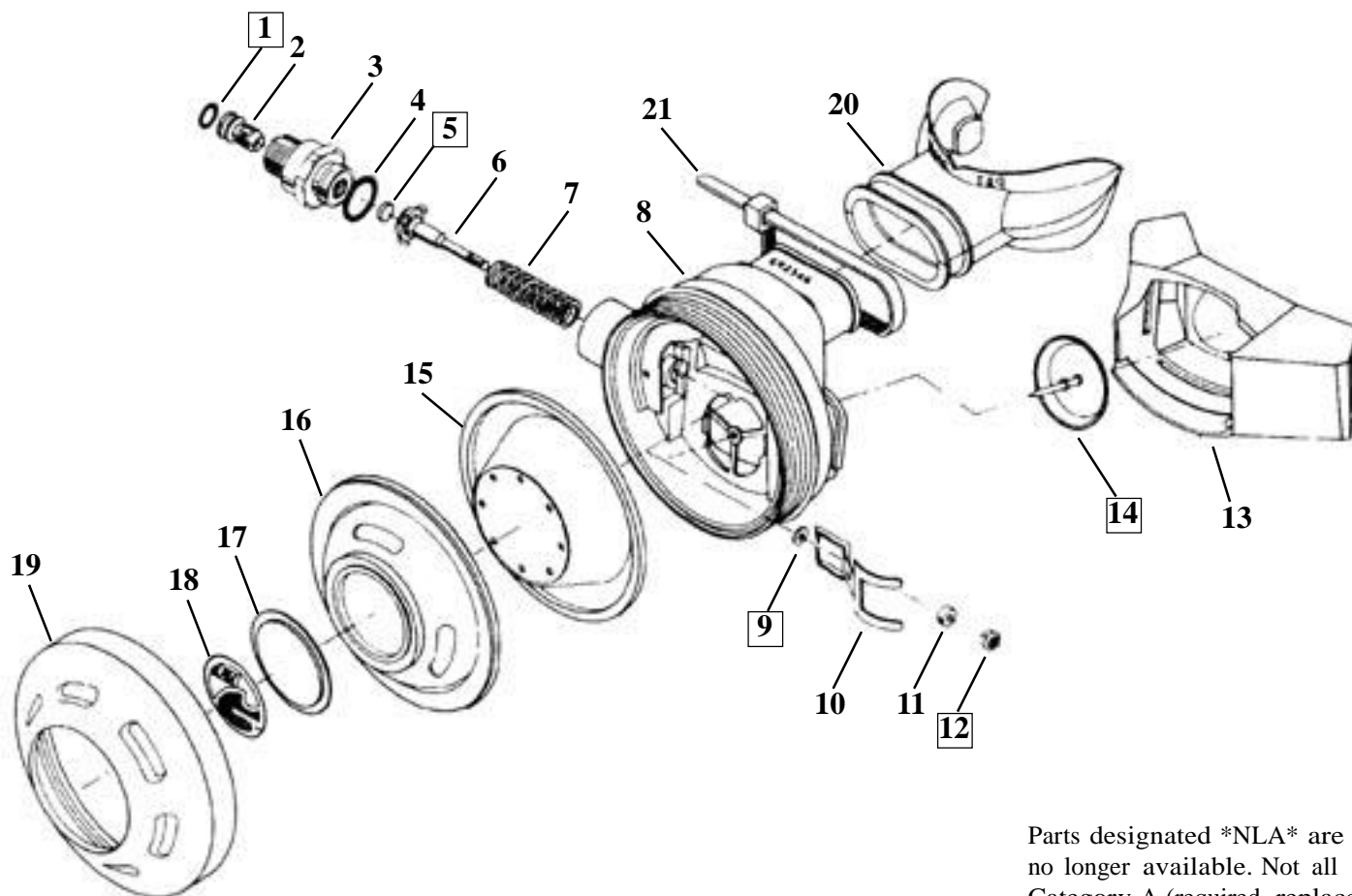


Alpha I & II Second Stage

NOTE: Numbers in boxes (20) represent schedule "A" parts, included in Service Kit



Parts designated *NLA* are no longer available. Not all Category A (required replacement during every service) parts are available. Service Procedure is not available. See Dealer Price List for Upgrade Program options.

Unless specifically listed, O-Rings are available only in bulk packaging to minimize costs.

Provided for identification and parts ordering only.

NLA = No Longer Available
NA = Not Available
n/s = Not Shown
DPL = see Dealer Price List

DIA.	CAT.	NUMBER	NAME	NOTES
1	A	2.010	O-Ring *order 2.010k (12)*	
	A	2.010k	O-Ring, (12)	
2	C	4332	Orifice, Stainless*order 6621*	Superceded By 6621. May Use 4332.
	C	6621	Orifice, Adj, Molded	Supersedes 4332 Stainless. May Use 4332.
3	C	4330	Coupling, Inlet	
4	B	3.906	O-Ring, *order 3.906k (12)*	
	B	3.906k	O-Ring, (12)	
5	A	4340	Seat, Poppet	
6	C	4333	Poppet	
7	C	5074	Spring, Poppet	Length 1.19 In. 9 Active Coils.
8	C	4279	Housing, Alp 1,2, *NLA*	
9	A	5117	Washer	
10	C	4341	Lever, Demand, Alpha 1,2	
11	B	4335	Spacer	
12	A	4336	Nut, Locking	
13	C	4327	Cover, Exhst, Alp1-2, *NLA*	
14	A	4229	Valve, Exhaust, Alp1-2 *NLA*	
15	B	4280	Diaphragm, Alp 1-2, *NLA*	
16	B	4277	Cover, Rubber, Alpha 1-2 *NLA*	
17	C	4338	Plate, Push, Alp 1-2	
18	C	4428	Decal, Alpha 1-2 *NLA*	
19	C	4278.01	Cover, Front, Alp1-2, *NLA*	
	C	4278.03	Cover, Front, Alp1-2, *NLA*	
	C	4278.07	Cover, Front, Alp1-2, *NLA*	
20	B	07.2003	Mouthpiece, Oc, Ortho, Cl	Packaged With Tie Wrap.
	B	07.3007	Mouthpiece, Oc, Ortho, Bk	Packaged With Tie Wrap.
	B	07.4485.07	Mouthpiece, Oc, Ortho, Bk (12)	Larger Bore. 12-pack with Tiewraps.
	B	07.4485.10	Mouthpiece, Oc, Ortho, Cl (12)	Larger Bore. 12-pack with Tiewraps.
21	A	1978.10	Wrap, Tie, 5 1/2", Cl	
n/s	A	2.010	O-Ring *order 2.010k (12)*	LP Hose to Inlet Coupling. Purchase Separately.
	A	2.010k	O-Ring, (12)	
n/s	B	3.903	O-Ring, *order 3.903k (12)*	Hose to First Stage.
	B	3.903k	O-Ring, (12)	
n/s	C	3982.07	Protector, Hose*order 04.1132*	Hose to First Stage. Available 12-pack 04.1132.
	C	04.1132	Protector, Hose (12) 1st Stg	12-pack of 3982.07 Hose to First Stage
Service Parts Kits				
		40.6106	Kit, Svc, Alpha 1-2, *NLA*	Exhaust Valve 4229 Not Available. See DPL for Upgrade Program Options.
Documents				
		12.2201	Procedure, Administration	
		12.2202	Procedure, Regulator General	