

SCUBAPRO

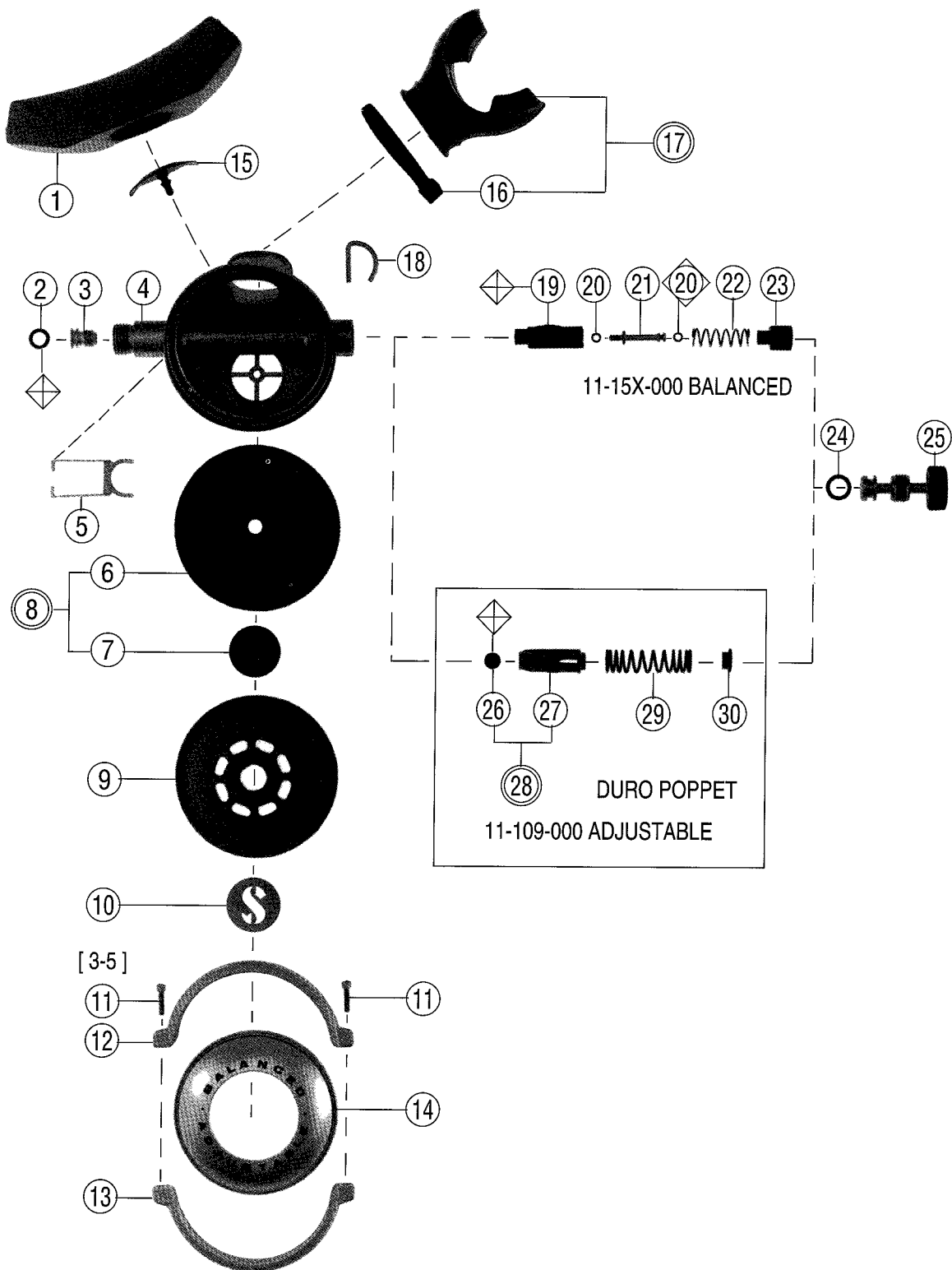
Technical Service Schematic

BALANCED ADJUSTABLE

#11-15X-000

ADJUSTABLE SECOND STAGE #11-109-000

Date 12/97 Revision R
Annual Repair Parts Kit #11-254-041
#11-200-041



SCUBAPRO

Technical Service Schematic

BALANCED ADJUSTABLE #11-15X-000
ADJUSTABLE SECOND STAGE #11-109-000

Parts

Date 12/97 Revision R
 Annual Repair Parts Kit #11-254-041
 #11-200-041

#	QTY	PART #	DESCRIPTION	COST
1	1	01-043-102	EXHAUST TEE, BLACK	
2	1	01-050-293	O-RING, RED	
* 3	1	11-109-109	ORIFICE	
4	1	11-109-002	CASE ASSEMBLY	
* 5	1	11-109-105	LEVER	
6	1	11-109-124	DIAPHRAGM, BLACK	
7	1	11-109-123	DISC, DIAPHRAGM	
8	1	11-109-011	DIAPHRAGM ASSY	
9	1	11-109-106	COVER, RUBBER	
10	1	01-005-101	INSIGNIA PLATE	
11	1	01-101-128	SCREW, SOCKET HEAD	
12	1	11-108-110	CLAMP, UNTHREADED	
13	1	11-108-109	CLAMP, THREADED	
14	1	01-150-105	COVER RING, BALANCED	
●	0	11-108-108	COVER RING	
15	1	11-109-128	EXHAUST VALVE	
▲	1	01-088-101	STRAP, MOUTHPIECE, BLACK	
	1	01-088-107	STRAP, MOUTHPIECE, CRYSTAL	
▲	1	01-040-010	MOUTHPIECE, BLACK	
	1	01-040-006	MOUTHPIECE, CRYSTAL	
18	1	11-109-121	RETAINING CLIP	
19	1	01-150-003	POPPET ASSY, BALANCED	
20	2	01-050-399	O-RING, POPPET STEM, BLACK	
21	1	01-150-103	STEM, POPPET	
22	1	01-020-216	SPRING, BALANCED POPPET	
23	1	01-150-102	BALANCED CHAMBER	
24	1	01-050-138	O-RING, ADJUSTMENT KNOB, BLUE	
* 25	1	11-250-009	KNOB, ADJUSTMENT	
26	1	01-108-101	SEAT	
27	1	01-200-105	DURO POPPET	
28	1	01-200-014	DURO POPPET ASSY	
29	1	01-020-109	SPRING	
30	0	11-109-104	SPRING PAD	
31	0	11-200-020	G200 TO G200B BALANCE KIT	
11-15X-000 BALANCED ADJUSTABLE				
11-109-000 ADJUSTABLE				

Technical Information:

The Annual Repair Parts Kit may contain o-rings used in the hose assembly. Refer to the separate hose schematic for identification.
 Reference Item #6: The molded part number imprinted on the rubber diaphragm is 11-109-124.

Special Engineering Notes:

Prior to installing the poppet, the orifice item #3 should be backed away from the poppet to avoid damage to the poppet seat.

To install the poppet, install the lever first into the slotted holes of the case assembly Item #4. Hold the case upright and drop the poppet into the tube, so the tabs that project from the poppet are facing towards the mouthpiece. These tabs must engage into the legs of the lever to lift the poppet when the lever is depressed.

Lubricate all threads with silicone grease, especially those of the adjustment knob Item #25 to reduce long term corrosion and provide easier disassembly at the next service interval.

Legend (prices subject to change without notice)

- Not Shown ◇ Dynamic O'Ring Replace Annually
- Optional Item ◇ Annual Replacement
- ▲ Limited Warranty [] Torque In Inch Pounds
- Older Configuration * See Note