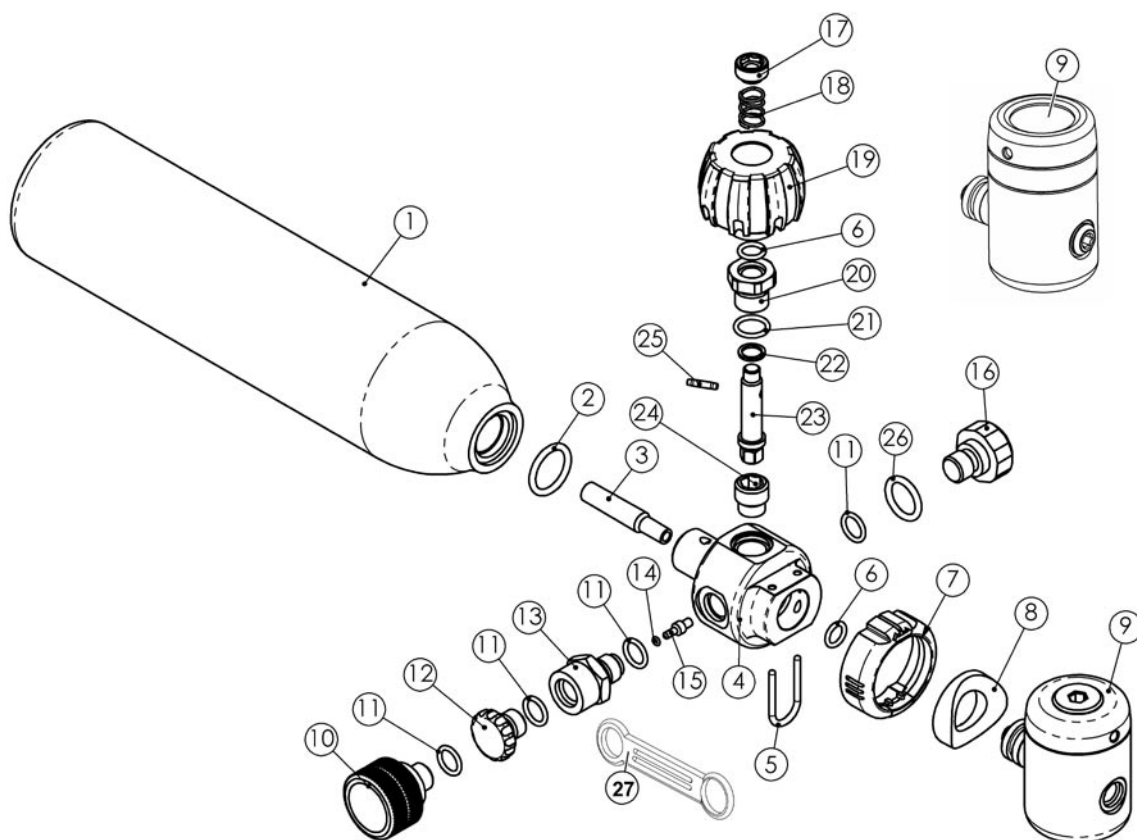


Extrair Exploded Parts Diagram



* All marked items must be replaced when serviced.

| | | | | | |
|-----|-----------|------------------------|-----|----------|--------------------|
| 1 | AP6513/GQ | Green 0.4lt Cylinder | 14* | AP6403 | 'O' Ring |
| | AP6513/B | Black 0.4lt Cylinder | 15 | AP6506/1 | Valve Indent |
| 2* | AP1628 | 'O' Ring | 16 | AP6101 | Pressure Indicator |
| 3 | AP4102 | Plastic Anti Rust Tube | 17 | AP1293 | Retaining Nut |
| 4 | AP6500 | M18 Extrair Body | 18 | AP4012 | Spring |
| 5 | AP6504 | Spring Clip | 19 | AP6505 | Extrair Knob |
| 6* | AP1409 | 'O' Ring | 20 | AP6503 | Gland Nut |
| 7 | AP6508 | Shroud | 21* | AP1410 | 'O' Ring |
| 8 | AP1446 | Distance Piece | 22* | AP4010 | PTFE Seal |
| 9 | AP0513 | Extrair First Stage US | 23 | AP4009 | Shaft |
| | AP0514 | Extrair First Stage DS | 24* | AP4008 | Valve |
| 10 | AP6512 | Charging Adaptor | 25 | AP4013 | Pin |
| 11* | AP1445 | 'O' Ring | 26* | AP1405 | 'O' Ring |
| 12 | AP6511 | Charging Cap | 27 | AP6519 | Charging Strap |
| 13 | AP6507/1 | Charging Body | | | |