

B2 Torque: 150 in lbs
170 kgf cm/17 Nm

B7 Torque: 260 in lbs
300 kgf cm/30 Nm

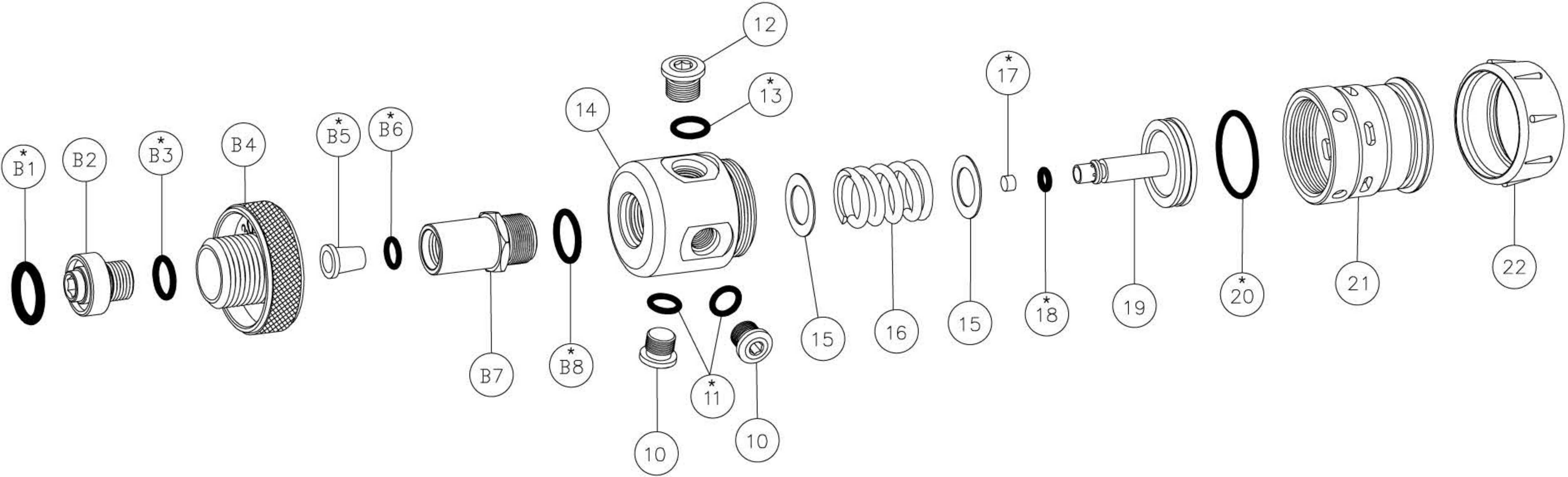
10, 12 Torque: 35 in lbs
40 kgf cm/4 Nm

Item	Description	Qty	Item	Description	Qty	Item	Description	Qty
B1/#2*	AS-112x90°	1	B8/#21*	AS-015x90°	1	16	Spring	1
B2	DIN Retainer	1	10	LP Plug	2	17*	HP Seat	1
B3/#4*	AS-013x90°	1	11/#12*	AS-011x70°	1	18*	AS-008x90°	1
B4	DIN Knob	1	12	HP Plug	1	19	Piston	1
B5*	DIN Filter	1	13/#14*	AS-012x90°	1	20/#16*	AS-020x70°	1
B6*	S-8x70°	1	14	Upper Body	1	21	Lower Body	1
B7	DIN Housing	1	15	Washer	2	22	Plastic Cap	1

Note: Items marked with * are included in service parts kit to be replaced at time of service;
#s indicate service parts kit labels, where different.

DGX GEARS FIRST REGULATOR

DX-701022A



DIVE GEAR EXPRESS