

COMPACT DIN / ARGON FIRST STAGE

HL406 Compact DIN 1st Stage

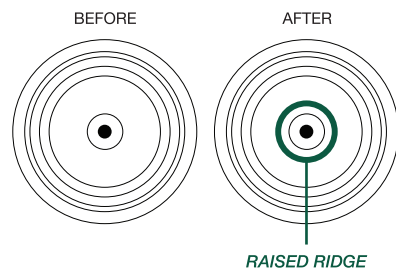
Maximum Supply Pressure = 3000 psi (207 bar)
Intermediate Pressure = 135-145 psi (9.3-10 bar)

HL405 Argon DIN 1st Stage (Black)

Maximum Supply Pressure = 3000 psi (207 bar)
Intermediate Pressure = 115-125 psi (8-8.6 bar)

Service Note:

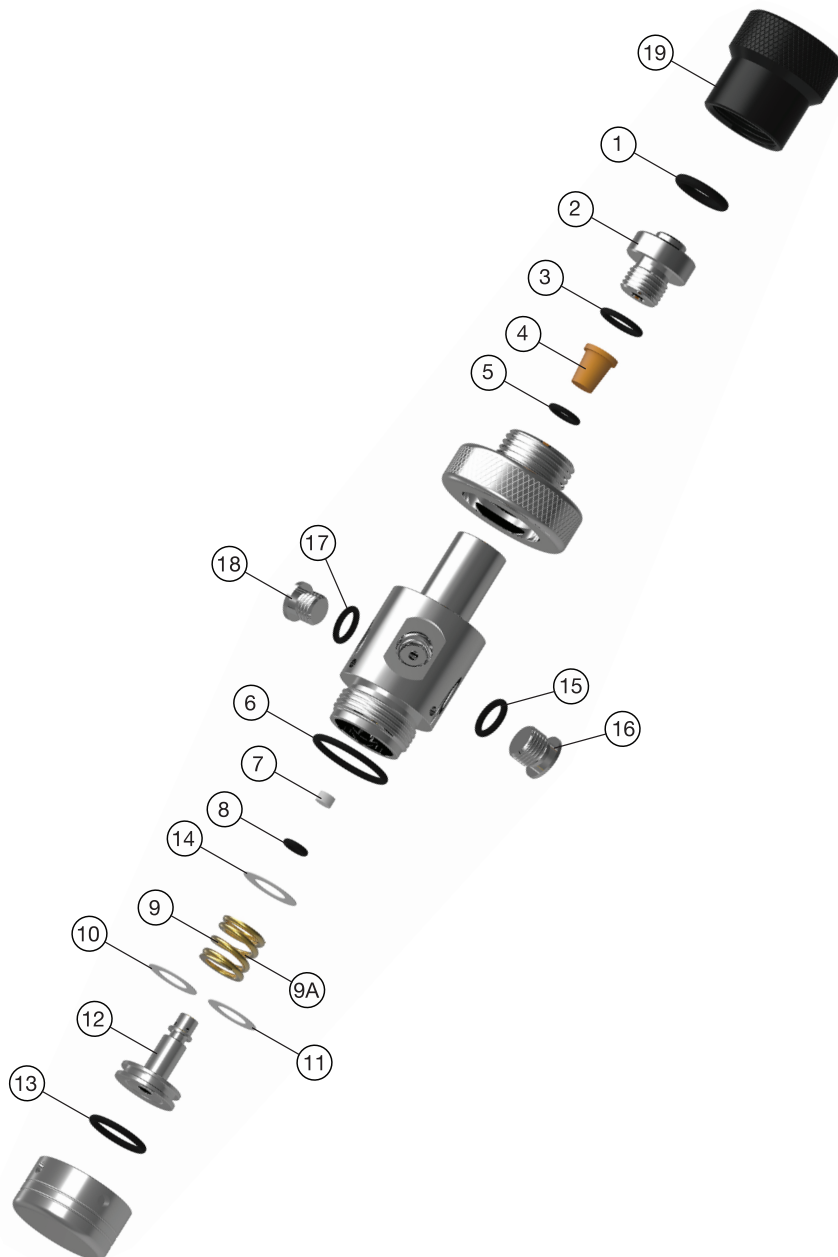
Adjust intermediate pressure by adding or removing shim washers as needed.



In 2018, an internal change was made to the main body. A raised ridge was added around the center bore in the main spring chamber. The main spring fits snugly over this raised ridge, keeping the main spring true to center.

The addition of this raised ridge means that the original shims, Key #10 & 11, will no longer fit around the center bore of the body. A larger shim was created, Key #14, that will fit.

The original shims, Key #10 & 11, will still fit on the backside of the piston head and can be placed there to boost IP as needed.



#	Part #	Description
RK8		
SERVICE KIT - COMPACT DIN 1ST STAGE / ARGON REGULATOR		
1.	RPH-01	O-RING, VITON
2.	RPH-02	DIN RETAINER
3.	RPH-03	O-RING, VITON
4.	RPH-04	INLET FILTER
5.	RPH-05	O-RING, VITON
6.	RPH-06	O-RING, VITON
7.	RPH-07	HIGH-PRESSURE SEAT
8.	RPH-08	O-RING, VITON
9.	RPH-09	MAIN SPRING
9A.	RPH-09A	MAIN SPRING, ARGON REGULATOR

#	Part #	Description
10.	RPH-10	SHIM, 14MM OD, .25 MM THICK
11.	RPH-11	SHIM, 14MM OD, .50 MM THICK
12.	RPH-12	PISTON
13.	RPH-13	O-RING, VITON
14.	RPH-14	SHIM, 17MM OD, .25 MM THICK
15.	RP200-17	HP PORT O-RING, VITON
16.	RP200-16	HP PORT PLUG
17.	RP400-19	MP PORT O-RING, VITON
18.	RP200-32	MP PORT PLUG
19.	HL401	DIN CAP, DELRIN W/ CORD

Part numbers in bold italics are standard replacement parts