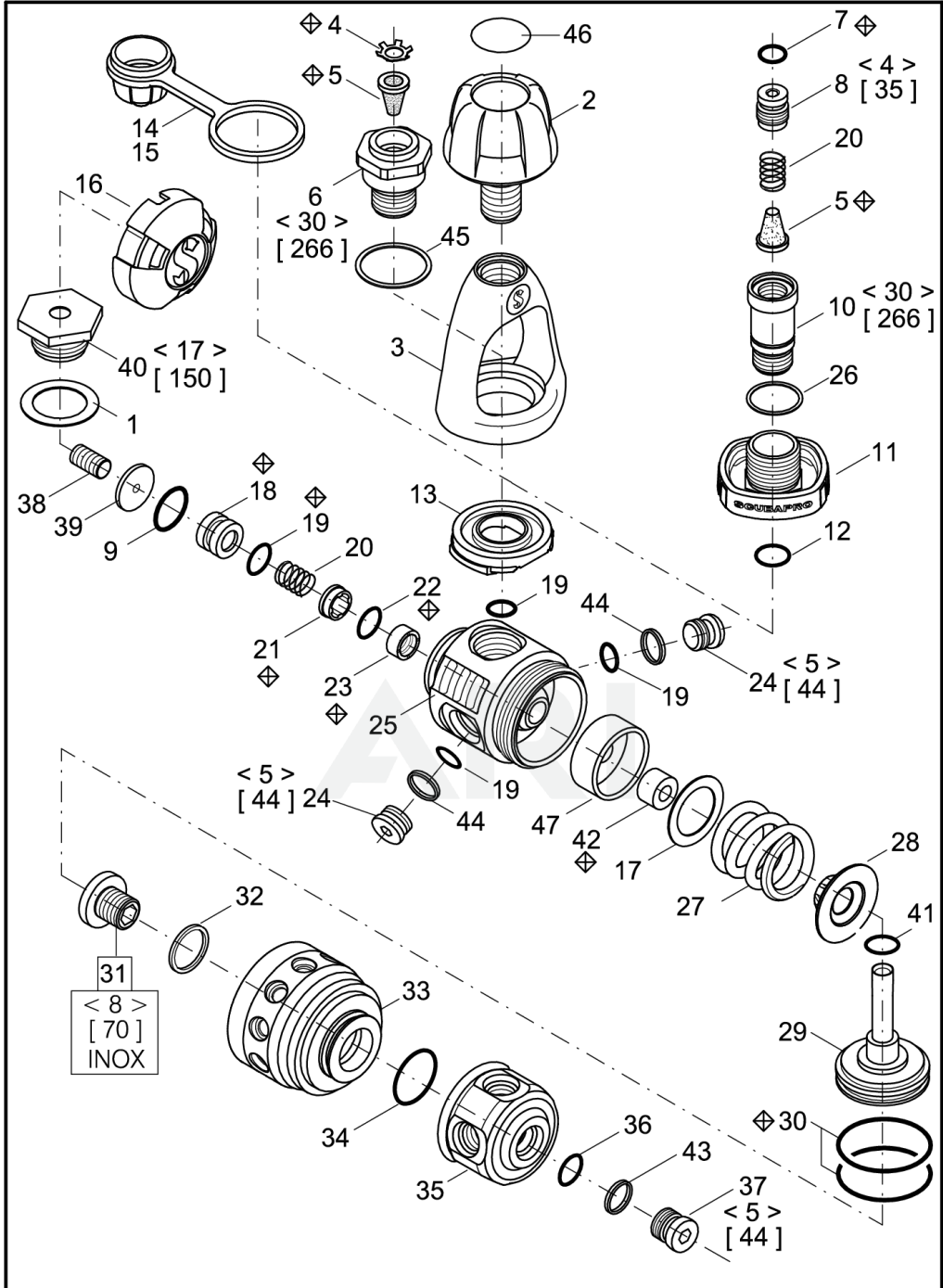


10.760.X00 REV.- CONF.- 07/2015



<div>&lt; &gt; Torque N·m <math>\pm \frac{2}{0}</math></div> <div>[ ] Torque lb·in <math>\pm \frac{18}{0}</math></div> <div>◆ Periodical replacement</div>	MK25 EVO T (TITANIUM)		Prepared by <i>R. Patrone</i>
	CAT. NO. 10-760-X00		CHECKED
	CONFIG. -	DATE 07/2015	1 / 1
	Rendered by ARI Network Services, Inc.		

## 10.760.X00 REV.- CONF.- 07/2015

Ref Number	Part Number	Part Description	Context Notes	Quantity
	10.750.045	SERVICE KIT MK25/EVO/T/TA/SA - MK20/U.L.		
1	01.060.220	WASHER		
2	10.760.108	YOKE SCREW 9/16"		
3	10.760.157	YOKE		
4	01.073.101	RETAINER	Periodical replacement	
5	01.028.109P	FILTER	Periodical replacement	
6	10.760.105	YOKE RETAIN. UNIV.	<> Torque N*m +2 - 0 [] Torque lb*in +18 -0	
7	01.050.428	O-RING	Periodical replacement	
8	10.760.124	FILTER RET. DIN 300	<> Torque N*m +2 - 0 [] Torque lb*in +18 -0	
9	01.050.147	O-RING		
10	10.760.123	KNOB RET. DIN 300	<> Torque N*m +2 - 0 [] Torque lb*in +18 -0	
11	10.760.133	KNOB, DIN 300		
12	01.050.347	O-RING		
13	10.713.016	SADDLE		
14	10.721.212	INLET PROTECT. INT		
15	10.721.211	INLET PROTECT. DIN		
16	10.713.013	CAP		
17	01.060.219	WASHER		
18	10.101.161	SEAT	Periodical replacement	
19	01.050.138	O-RING	Periodical replacement	

Ref Number	Part Number	Part Description	Context Notes	Quantity
20	01.020.700	SPRING		
21	10.700.105	RING	Periodical replacement	
22	01.050.136	O-RING	Periodical replacement	
23	01.060.607P	RING	Periodical replacement	
24	10.760.139P	PLUG 7/16"	<> Torque N*m +2 - 0 [] Torque lb*in +18 -0	
25	10.760.103P	BODY		
26	01.060.502	WASHER		
27	01.020.225	SPRING		
28	10.600.135	BUSHING		
29	10.600.155P	COMPOS. PISTON		
30	01.050.177	O-RING	Periodical replacement	
31	10.500.104	SWIVEL RETAINER		
32	01.060.500	WASHER		
33	10.760.165P	CAP		
34	01.050.162	O-RING (PU)		
35	10.760.164	SWIVEL		
36	01.050.132	O-RING		
37	10.760.104P	PLUG, LP	<> Torque N*m +2 - 0 [] Torque lb*in +18 -0	
38	01.102.104	ADJUST. SCREW		
39	10.752.102	SPACER		
40	10.760.102	SEAT RETAINER	<> Torque N*m +2 - 0 [] Torque lb*in +18 -0	
41	01.050.360	O-RING		

Ref Number	Part Number	Part Description	Context Notes	Quantity
42	10.700.403	SLEEVE	Periodical replacement	
43	01.060.611	WASHER		
44	01.060.610	WASHER		
45	01.060.153	WASHER		
46	01.006.043	DECAL		
47	10.713.015	BUSHING		