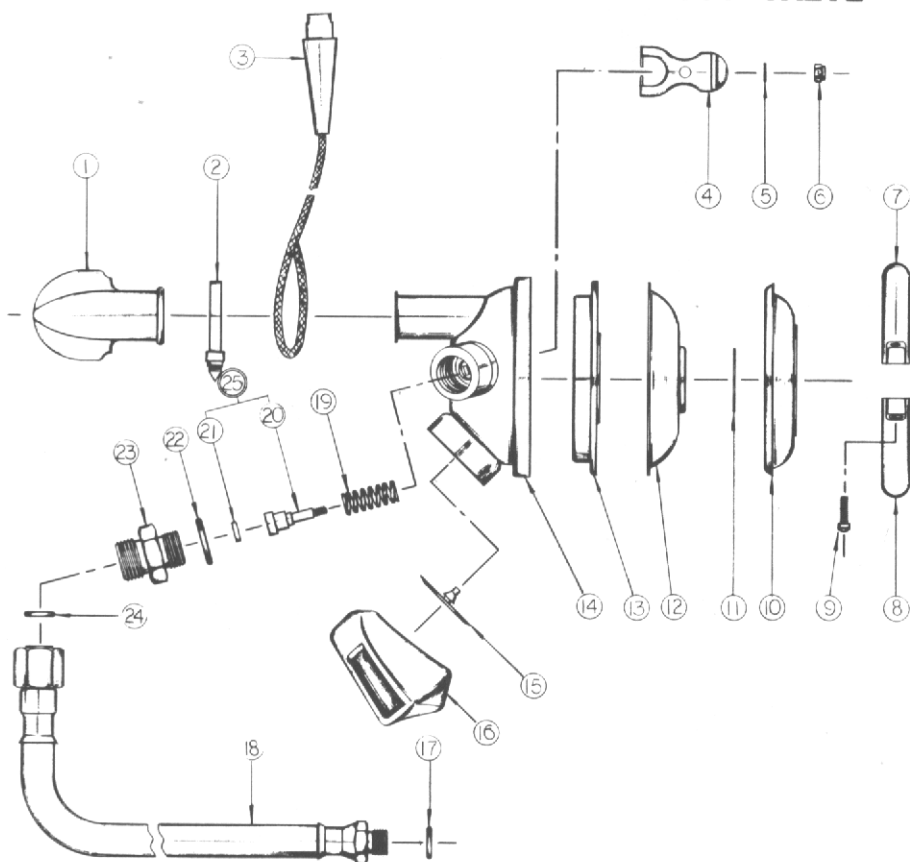


CONVENTIONAL DOWNSTREAM VALVE SECOND STAGE ENLARGED EXHAUST VALVE



#	CAT. NO.	DESCRIPTION	#	CAT. NO.	DESCRIPTION
1	109-66	MOUTHPIECE	14	108-103	CASE ASSY
2	108-63	MOUTHPIECE STRAP	15	109-64 *	EXHAUST VALVE
3	109-67	SAFETY LANYARD ASSY.	16	108-102	EXHAUST TEE
4	108-57	DEMAND VALVE LEVER	17	101-9 *	O'RING
5	108-58	DEMAND VALVE WASHER	18	108-61	HOSE
6	108-59	DEMAND VALVE ADJ. NUT	19	108-55	SPRING
7	108-76	CLAMP - THREAD	20	108-54	DEMAND VALVE STEM
8	108-77	CLAMP - UNTHREAD	21	108-53	DEMAND VALVE SEAT
9	108-78	PHILLIPS HEAD SCREW (2 REQ'D)	22	101-12	O'RING
10	108-70	COVER RING	23	108-60	DEMAND VALVE BODY
11	108-69	INSIGNIA PLATE	24	101-6 *	O'RING
12	108-68	COVER	25	108-36	SEAT & STEM ASSY
13	108-67	DIAPHRAGM ASSY			

