

109 ADJUSTABLE 2ND STAGE

#	CAT. NO.	DESCRIPTION
1	109-65	EXHAUST TEE
2	109-64 *	EXHAUST VALVE
3	108-76	THREADED CLAMP
4	108-77	UNTHREADED CLAMP
5	108-78	SCREW (2-REQ) PHILLIPS HEAD
6	108-70	COVER RING
7	108-69	INSIGNIA PLATE
8	109-63	COVER
9	109-62	DIAPHRAGM
10	109-61	DIAPHRAGM VALVE LEVER
11	109-52	CASE ASSY.
12	109-67	SAFETY LANYARD ASSY.
13	108-63	MOUTHPIECE STRAP
14	109-66	MOUTHPIECE
15	108-61	HOSE
16	101-6 *	O'RING
17	109-53	O'RING
18	109-54	ADJUSTABLE ORIFICE
19	101-9 *	RETAINING CLIP
20	109-71	POPET ASSY.
21	109-69	SPRING
22	109-57	SPRING
23	109-58	SPRING PAD
24	101-9	O'RING
25	109-59	ADJUSTMENT KNOB

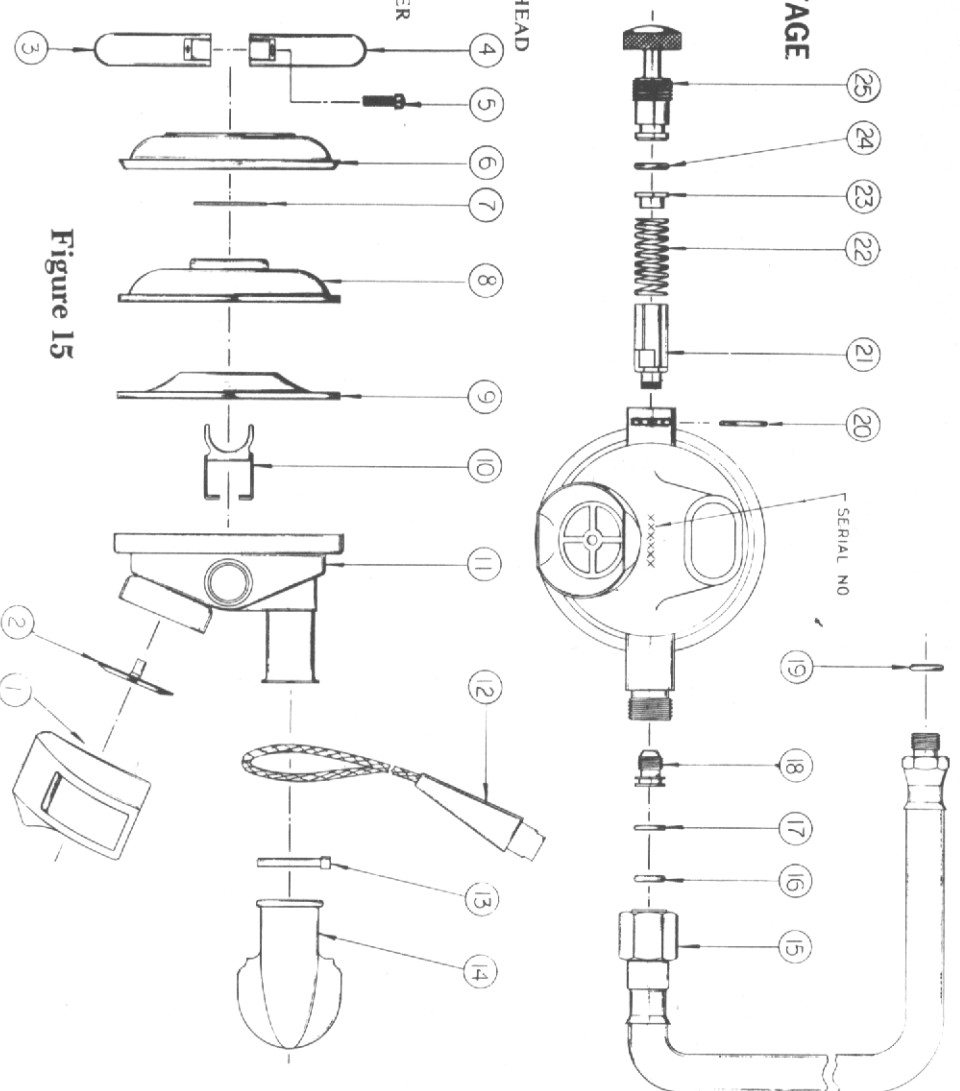


Figure 15