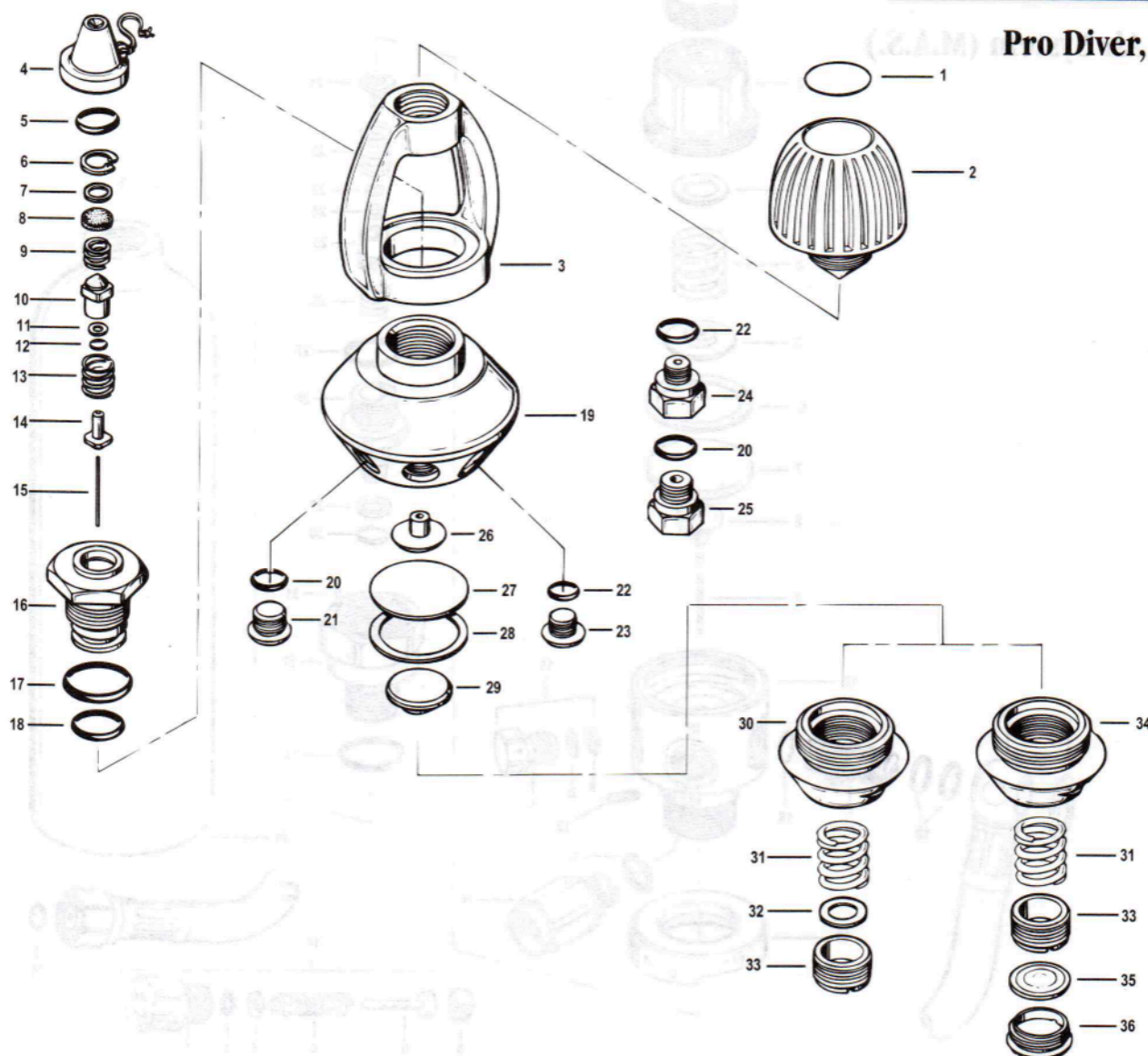


# First-Stage Regulators

## Pro Diver, Royal



Key #	Part #	Description
----	NLA	First Stage, Pro Diver
----	1021-95	Overhaul Parts Kit, non-Supreme
1 ----	1003-88	Decal
2 ----	1075-06	Yoke Screw
3 ----	1034-53	Yoke
4 ----	1010-12	Dust Cap
5 ----	8201-20	O-ring
6 ----	8630-51	Retaining Ring
7 ----	8450-95	Washer, Filter
8 ----	1051-06	Filter
9 ----	1046-13	Spring
10 ----	1015-65	Spring Block
11 ----	8280-05	Back-up Ring
12 ----	8240-06	O-ring
----	8200-06	O-ring, Purple (suggested for cold water)
13 ----	1015-04	Spring
14 ----	1059-40	HP Seat
15 ----	1015-68	Pin
16 ----	1034-63	High Pressure Nozzle
17 ----	9570-30	O-ring
18 ----	9573-15	O-ring
19 ----	1061-01	Body
20 ----	9570-25	O-ring, 1/2" port

Key #	Part #	Description
----	8200-11	O-ring, 3/8" port
21 ----	1020-04	Port Plug, Low Pressure, 1/2"
----	1043-04	Port Plug, Low Pressure, 3/8"
22 ----	9570-04	O-ring, 7/16" HP Port
23 ----	1020-03	Port Plug, High Pressure, 7/16"
24 ----	1020-85	Adapter, HP, 3/8" Fem. to 7/16" Male
25 ----	1020-82	Adapter, LP, 3/8" Fem. to 1/2" Male
26 ----	1015-69	Pin Support
27 ----	1034-29	Diaphragm
28 ----	8210-26	Thrust Washer
29 ----	1017-28	Spring Pad
30 ----	1034-79	Spring Retainer
31 ----	1059-44	Spring
32 ----	8450-97	Washer, Main Spring (non-supremes only)
33 ----	1015-49	Adjustment Screw
		<b>Used Only on Supreme Models</b>
34 ----	NLA	Spring Retainer, Supreme
35 ----	1088-53	Secondary Diaphragm
36 ----	1088-54	Retainer, Secondary Diaphragm
n/s ----	1088-65	Silicone Fluid

Part numbers in **BOLD ITALICS** indicate standard overhaul replacement part.