

# 109 ADJUSTABLE 2ND STAGE

# CAT. NO. DESCRIPTION

- 1 109-65 EXHAUST TEE
- 2 109-64 \* EXHAUST VALVE
- 3 108-76 THREADED CLAMP
- 4 108-77 UNTHREADED CLAMP
- 5 108-78 SCREW (2-REQ) PHILLIPS HEAD
- 6 108-70 COVER RING
- 7 108-69 INSIGNIA PLATE
- 8 109-63 COVER
- 9 109-62 DIAPHRAGM
- 10 109-61 DIAPHRAGM VALVE LEVER
- 11 109-52 CASE ASSY.
- 12 109-67 SAFETY LANYARD ASSY.
- 13 108-63 MOUTHPIECE STRAP
- 14 109-66 MOUTHPIECE
- 15 108-61 HOSE
- 16 101-6 \* O-RING
- 17 109-53 O-RING
- 18 109-54 ADJUSTABLE ORIFICE
- 19 101-9 \* O-RING
- 20 109-71 RETAINING CLIP
- 21 109-69 POPPET ASSY.
- 22 109-57 SPRING
- 23 109-58 SPRING PAD
- 24 101-9 O-RING
- 25 109-59 ADJUSTMENT KNOB

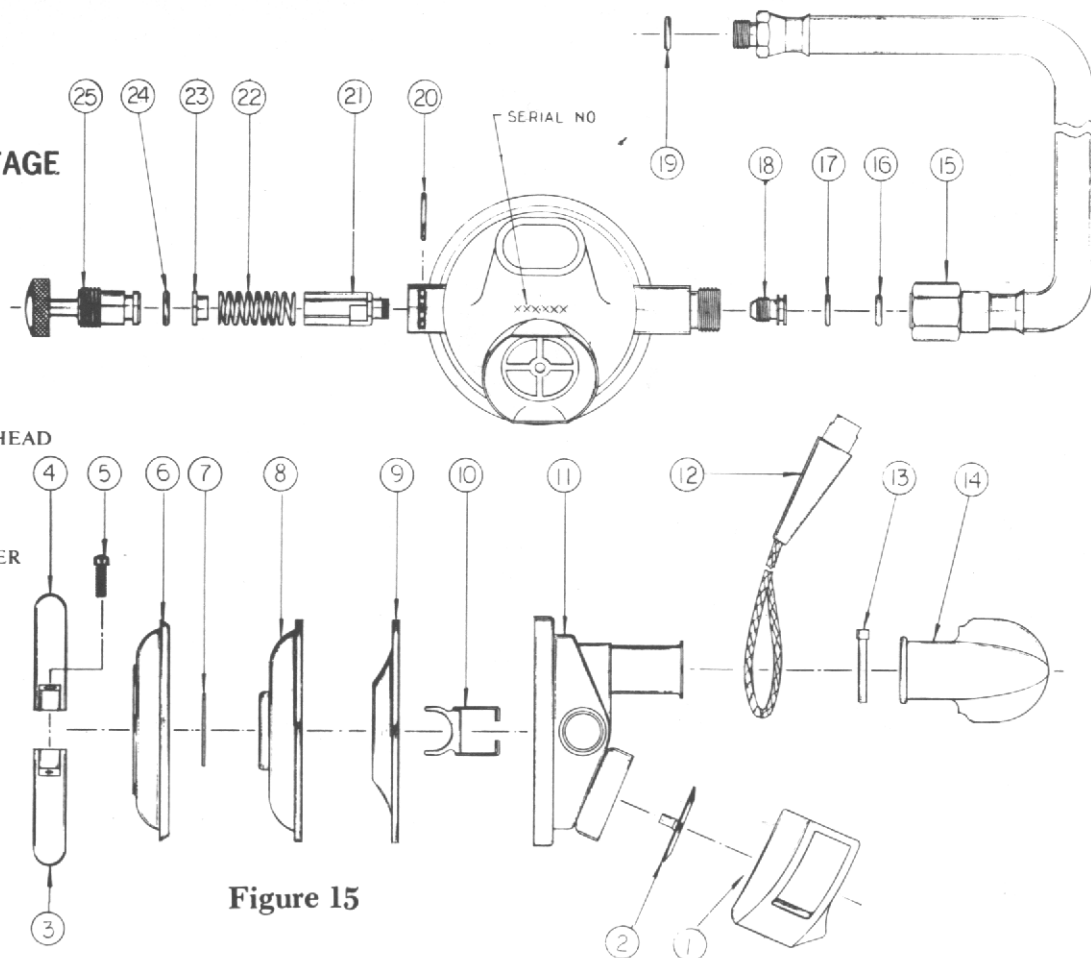


Figure 15