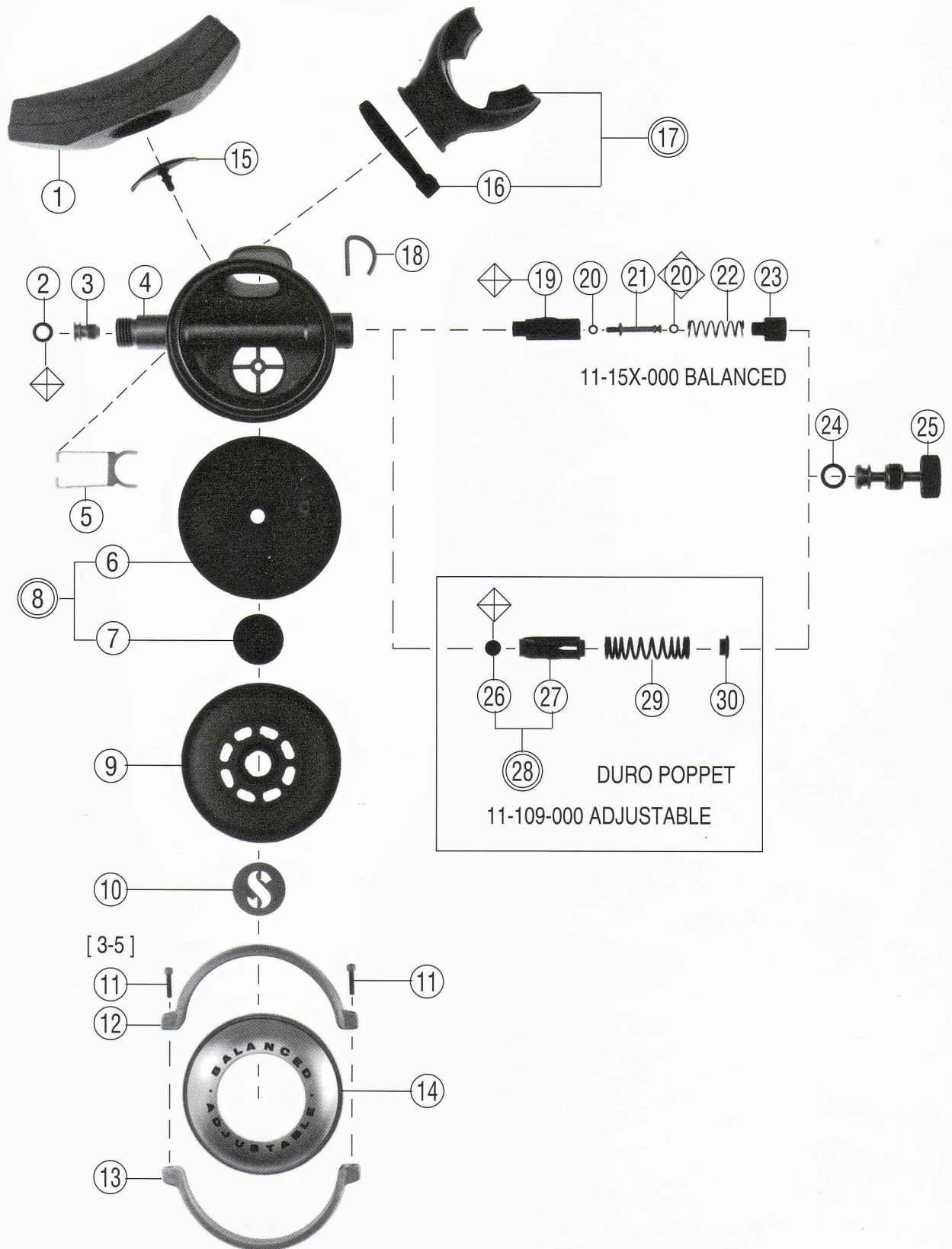


# SCUBAPRO

Technical Service Schematic

**BALANCED ADJUSTABLE #11-15X-000**  
**ADJUSTABLE SECOND STAGE #11-109-000**

Date 12/97      Revision R  
Annual Repair Parts Kit #11-254-041  
#11-200-041



# SCUBAPRO

Technical Service Schematic

**BALANCED ADJUSTABLE #11-15X-000**  
**ADJUSTABLE SECOND STAGE #11-109-000**

## Parts

Date 12/97      Revision R  
 Annual Repair Parts Kit #11-254-041  
 #11-200-041

#	QTY	PART #	DESCRIPTION	COST
1	1	1	01-043-102 EXHAUST TEE, BLACK	
2	1	1	01-050-293 O-RING, RED	
* 3	1	1	11-109-109 ORIFICE	
4	1	1	11-109-002 CASE ASSEMBLY	
* 5	1	1	11-109-105 LEVER	
6	1	1	11-109-124 DIAPHRAGM, BLACK	
7	1	1	11-109-123 DISC, DIAPHRAGM	
8	1	1	11-109-011 DIAPHRAGM ASSY	
9	1	1	11-109-106 COVER, RUBBER	
10	1	1	01-005-101 INSIGNIA PLATE	
11	1	2	01-101-128 SCREW, SOCKET HEAD	
12	1	1	11-108-110 CLAMP, UNTHREADED	
13	1	1	11-108-109 CLAMP, THREADED	
14	1	0	11-150-105 COVER RING, BALANCED	
● 0	1	1	11-108-108 COVER RING	
15	1	1	11-109-128 EXHAUST VALVE	
▲ 16	1	1	01-088-101 STRAP, MOUTHPIECE, BLACK	
	1	1	01-088-107 STRAP, MOUTHPIECE, CRYSTAL	
▲ 17	1	1	01-040-010 MOUTHPIECE, BLACK	
	1	1	01-040-006 MOUTHPIECE, CRYSTAL	
18	1	1	11-109-121 RETAINING CLIP	
19	1	0	11-150-003 POPPET ASSY, BALANCED	
20	2	0	01-050-399 O-RING, POPPET STEM, BLACK	
21	1	0	11-150-103 STEM, POPPET	
22	1	0	01-020-216 SPRING, BALANCED POPPET	
23	1	0	11-150-102 BALANCED CHAMBER	
24	1	1	01-050-138 O-RING, ADJUSTMENT KNOB, BLUE	
* 25	1	1	11-250-009 KNOB, ADJUSTMENT	
26	1	0	11-108-101 SEAT	
27	1	0	11-200-105 DURO POPPET	
28	1	0	11-200-014 DURO POPPET ASSY	
29	1	0	01-020-109 SPRING	
30	0	1	11-109-104 SPRING PAD	
31	0	1	11-200-020 G200 TO G200B BALANCE KIT	
11-15X-000 BALANCED ADJUSTABLE				
11-109-000 ADJUSTABLE				

## Technical Information:

The Annual Repair Parts Kit may contain o-rings used in the hose assembly. Refer to the separate hose schematic for identification.  
 Reference Item #6: The molded part number imprinted on the rubber diaphragm is 11-109-124.

## Special Engineering Notes:

Prior to installing the poppet, the orifice item #3 should be backed away from the poppet to avoid damage to the poppet seat.

To install the poppet, install the lever first into the slotted holes of the case assembly Item #4. Hold the case upright and drop the poppet into the tube, so the tabs that project from the poppet are facing towards the mouthpiece. These tabs must engage into the legs of the lever to lift the poppet when the lever is depressed.

Lubricate all threads with silicone grease, especially those of the adjustment knob Item #25 to reduce long term corrosion and provide easier disassembly at the next service interval.

## Legend (prices subject to change without notice)

- Not Shown      ◇ Dynamic O'Ring Replace Annually
- Optional Item      ◇ Annual Replacement
- ▲ Limited Warranty      [ ] Torque In Inch Pounds
- Older Configuration      \* See Note