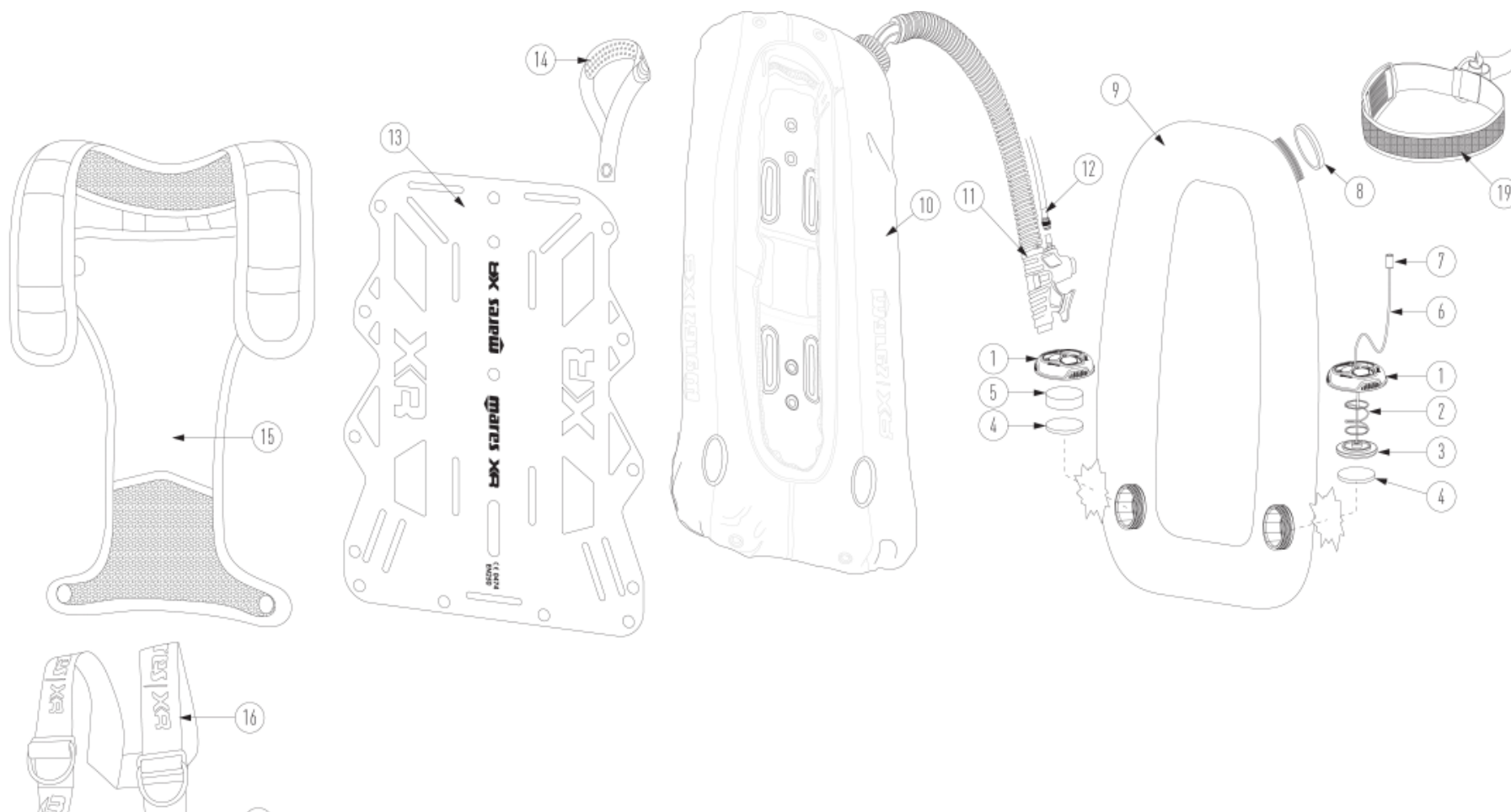


XR-REC SILVER
SINGLE BACKMOUNT SET

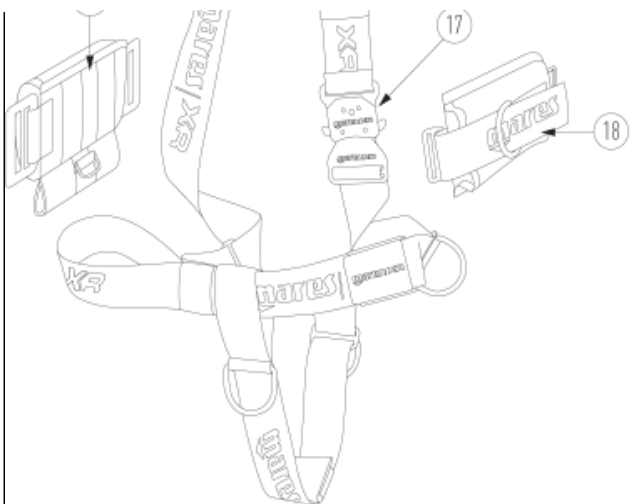


CHART NO : XRS2

XR-REC SILVER

UPDATE : 21/1272018

REF	CODE	DESCRIPTION	€	REF	CODE	DESCRIPTION	€
1	A	CAP XR, OP VALVE		18	47201537	SIDE WEIGHT POCKET (PAIR)	
2	A	SPRING, RAPID EXHAUST VALVE		19	47201515	TANK BANDS SYLVER KNIGHT (PAIR)	
3	A	SEAT DISC, OVERPRESSURE VALVE		ASSEMBLIES			
4	47159125 (A)	SEAL, OVERPRESS. VALVE, B.C.V.		A	47201314	RAPID EXHAUST KIT	
5	47201398	CILINDER BLIND PLUG					
6	A	LINE, BLACK, DIAM. 1,75					
7	47201257	PULL KNOB R.E. VALVE					
8	47201255	SEAL, CONNECTING LOCKNUT,B.C.V XR					
9	47201384	DONUT WELDED BLADDER 16_34					
10	47201268	BLADDER 16					
11	47201540	INFLATOR X01 CPL 2K20					
12	47159682	LP HOSE INFLATOR (SHORT)					
13	47201486	BACKPLATE ALU 3mm					

14	47201542	UPPER CENTRAL HANDLE XR	
15	417560	XR-REC BACK-SHOULDERS PADDING	
16	417502	HEAVY LIGHT HARNESS	
17	417556	METAL BUCKLE ALU BLACK	
