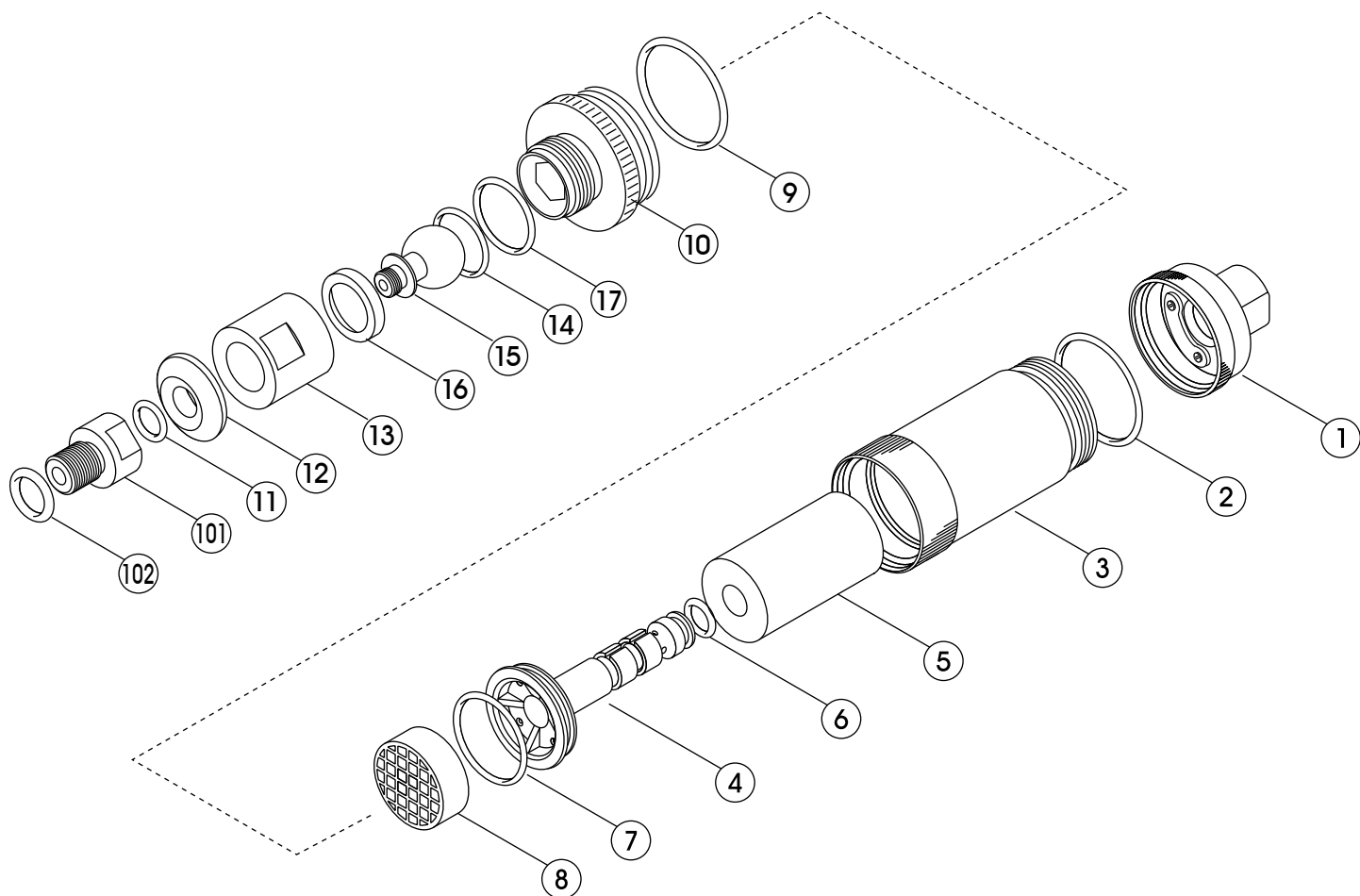


# bio-filter after '04



※ Parts #101 to #102 are only used in 1/2 port units.

No.	Code	Description
1	2120270101	CAP WITH WATER FILLING PORT SILVER/ BRASS 3/8
	2120200100	CAP WITH WATER FILLING PORT S.GD 3/8 (AL-2000-2016)
	2120200110	CAP WITH WATER FILLING PORT S.GD 1/2 (AL-2000-2016)
2	3993592023	O-RING ARP-023
3	3120200023	HUMIDIFIER TUBE FOR B/F :TEXTURED BRASS
	3120200012	HUMIDIFIER TUBE FOR B/F :TEXTURED (AL - RETIRED)
4	3102080069	MOISTURIZER TUBE FOR BIO-FILTER
5	1120200003	MOISTURIZING PAD 47MM FOR BIO-FILTER
6	3993092004	O-RING P-7 FOR REGULATOR
7	3993592020	O-RING ARP-020
8	1122000006	ELECTRET FILTER CL FOR B/F, B/M & A-107,110,210,230
9	3993592023	O-RING ARP-023
10	3120200025	CONNECTOR TUBE SILVER/ BRASS
	3120200026	CONNECTOR TUBE SILVER (AL 2000-2016)

No.	Code	Description
11	3993592011	O-RING ARP-011/HS75
12	3123080002	DAMPER : HS75 FOR BF
13	3120200016	COVER : MBCR-3 C3601B FOR B.F
14	3993392513	O-RING S-16/HS75 FOR REGULATOR
15	3120200015	BALL : MBCR-3 C6783B FOR B.F
16	3120200042	BALL RECEIVER FOR B/F (WT)
17	3993393518	O-RING S-18/HS75 FOR REGULATOR
101	1129800013	ADAPTER (STANDARD 3/8 TO 1/2" )
102	3993592013	O-RING ARP-013/HS75 (1/2" ONLY)
	3122000101	CHECK VALVE (FOR CAP, NO. 1)
	3120010000	SCREW FOR CHECK VALVE