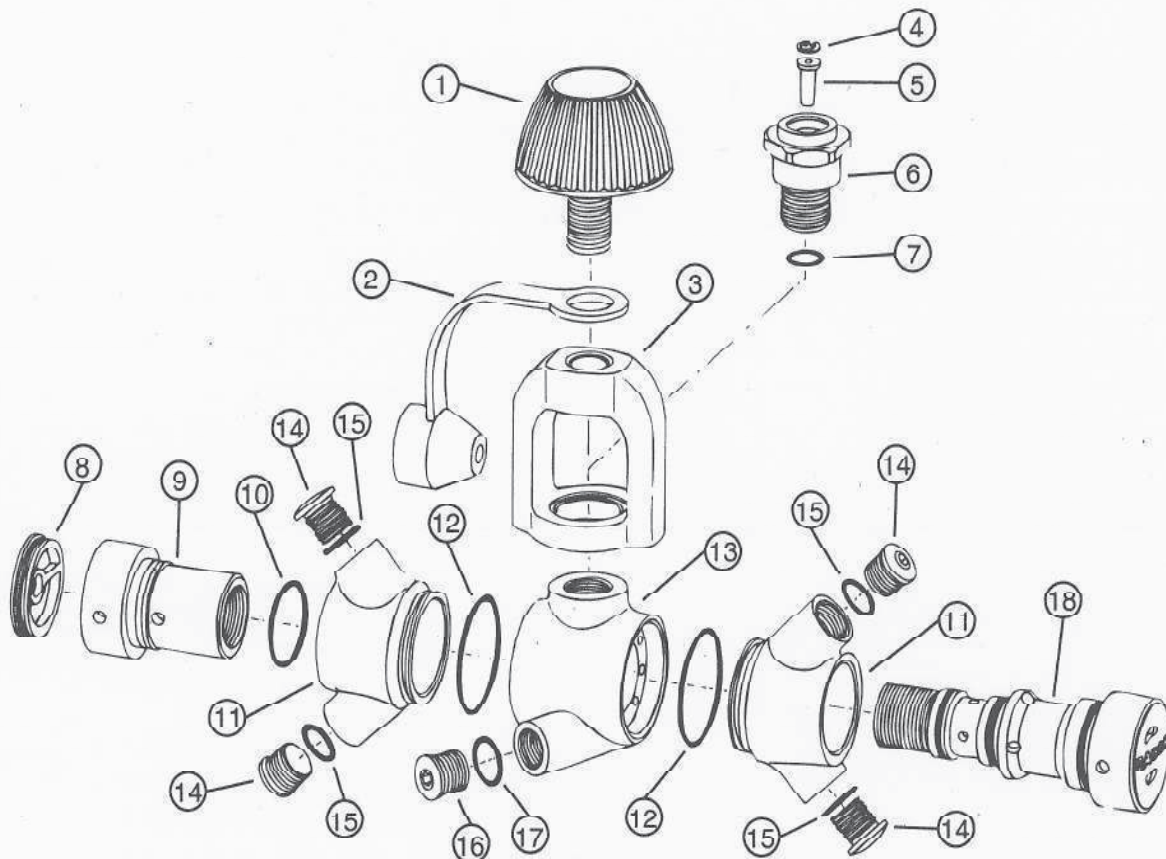


#	QTY	PART #	KEY	DESCRIPTION
1	1	0200-20		YOKE SCREW
2	1	0510-42		DUST CAP
3	1	0390-08		YOKE
4	1	0250-19	①②	RETAINING CLIP
5	1	0110-08	①②	FILTER
6	1	0182-65		YOKE SUPPORT
7	1	0060-01	①	O-RING
8	1	0625-65		PLUG
9	1	0031-72		CLIP
10	1	0060-93	①	O-RING
11	2	0010-13		SWIVEL
12	2	0060-92	①	O-RING
13	1	0010-11		BODY
14	3	0410-24		L.P. PLUG
15	4	0060-51	①	O-RING
16	1	0410-20		H.P. PLUG
17	1	0060-43		O-RING
18	1	1119-00		REGULATOR MODULE ASSM.



EXTREME
FIRST STAGE

9/93

First Stage
Regulators

PAGE

1-44

KEY

- ① Included in annual overhaul kit #9680-18
- ② Included in annual service kit #9680-16

EXTREME FIRST STAGE**Custom Tools Supplied by Dacor**

1. 0980-61 O-Ring Tool Kit
2. 9501-00 Light Silicone Spray
3. 0980-33 Threaded Rod
4. 0980-19 5/32" Allen Wrench
5. 0980-62 Spanner Wrench
6. 0980-13 Cap Wrench

Standard Tools Needed:

1. Vise
2. Socket Wrench
3. Wide-Blade Screwdriver or Drag Link Tool
4. Retaining Clip Pliers
5. 1" Open-End Wrench or Adjustable Wrench

Disassembly:

Step 1: Remove all hoses and port plugs from the first stage. Remove all o-rings from hose fittings and port plugs using the o-ring removal tool.

Step 2: Install the threaded rod into the high pressure port of the first stage. Securely place the rod in a vise - creating a steady platform for servicing the unit.

Step 3: Remove the yoke support screw (6) using an open-end wrench or an adjustable wrench. If there is a D.I.N. adaptor, use an adjustable wrench. Remove the sealing o-ring (7) from the yoke support or D.I.N. adaptor.

Step 4: Remove the retaining clip (4) using internal retaining ring pliers. Remove the filter (5).

Step 5: A. Remove the module assembly (18). There are two ends of this assembly. You can tell which end is the module if you can look through the holes in the plastic cap and see a black diaphragm. (on the cup side you will see chrome) Remove the cup (9) from the module using the spanner wrench, to expose the threaded end of the module.

B. Remove the o-ring (10) that is located on the cup's outside diameter.

C. Next, remove the module (18) and swivels (11) by applying pressure on the balance chamber side. A wide blade screwdriver can be used, but if the regulator has been out in the field under heavy use, turning the module with a drag link tool on a socket wrench will make removal easier.

D. Remove the external o-rings (12) from the swivels (11) using the o-ring removal tool.

Step 6: At this point, you are ready to disassemble the module. Refer to the repair procedure for the module assembly located in this manual.

Step 7: After removing the body from the threaded rod, the disassembly phase is complete.

Cleaning:

Step 1: The next phase is cleaning and inspection. All metal parts should be cleaned using a solution made from 1 gallon of white vinegar (with 5% acid content) and a quart of any general purpose household cleaner. If you need less solution, use a 4:1 ratio of vinegar to household cleaner. Soak the parts no longer than 15 minutes or 5 minutes if using an ultrasonic cleaner. All plastic and rubber items (including o-rings) should be cleaned with fresh water only. Then air dry all parts, preferably using an air gun.

Step 2: Discard the old filter, and retaining clip. Replacements for these parts are included in the annual service kit. Replace all o-rings included in the annual overhaul kit if used.

Step 3: Clean and inspect all other o-rings and lubricate them with a light silicone spray. Replace any questionable o-rings.

Assembly:


Step 1: Install the hollow body (13) onto the vise secured threaded rod, using the high pressure port.

Step 2: Install a new filter (5) and retaining clip (4) into the yoke support (6) or D.I.N. adaptor, making sure that the sharp side of the ring is up. Install the sealing o-ring (7).

Step 3: Install the yoke support assembly (6), yoke (3), dust cap (2), and yoke screw (1) or equivalent D.I.N. components into body. Apply one drop of Blue Loctite® 242 to yoke support threads. Tighten assembly with open end wrench or adjustable wrench to a torque specification of 16-18 foot pounds.

Step 4: Install the body swivel o-rings (12) and install one body swivel (11) into the high pressure side of the body (the end facing the H.P. port). Install the other body swivel onto the module. Note: one port is raised (extended) this should be used for the primary.


Step 5: The module is now ready to be re-inserted into the first stage assembly of the Extreme. First, install the

REPAIR PROCEDURE	PAGE 1-45	EXTREME FIRST STAGE		
		First Stage Regulators	9/93	

cup o-ring (10).

Step 6: Insert the module/swivel assembly into the body from the side opposite the high pressure port. Manually push the module into the body until 1/2" of threads are visible on the opposite side of the body.

Step 7: Screw the cup (9) of cup/swivel assembly onto the module using the spanner wrench. The wrenching action will draw the assemblies together. Tighten to 16-18 ft. lbs.

	EXTREME FIRST-STAGE		PAGE	REPAIR PROCEDURE
	9/93	First Stage Regulators	1-46	