

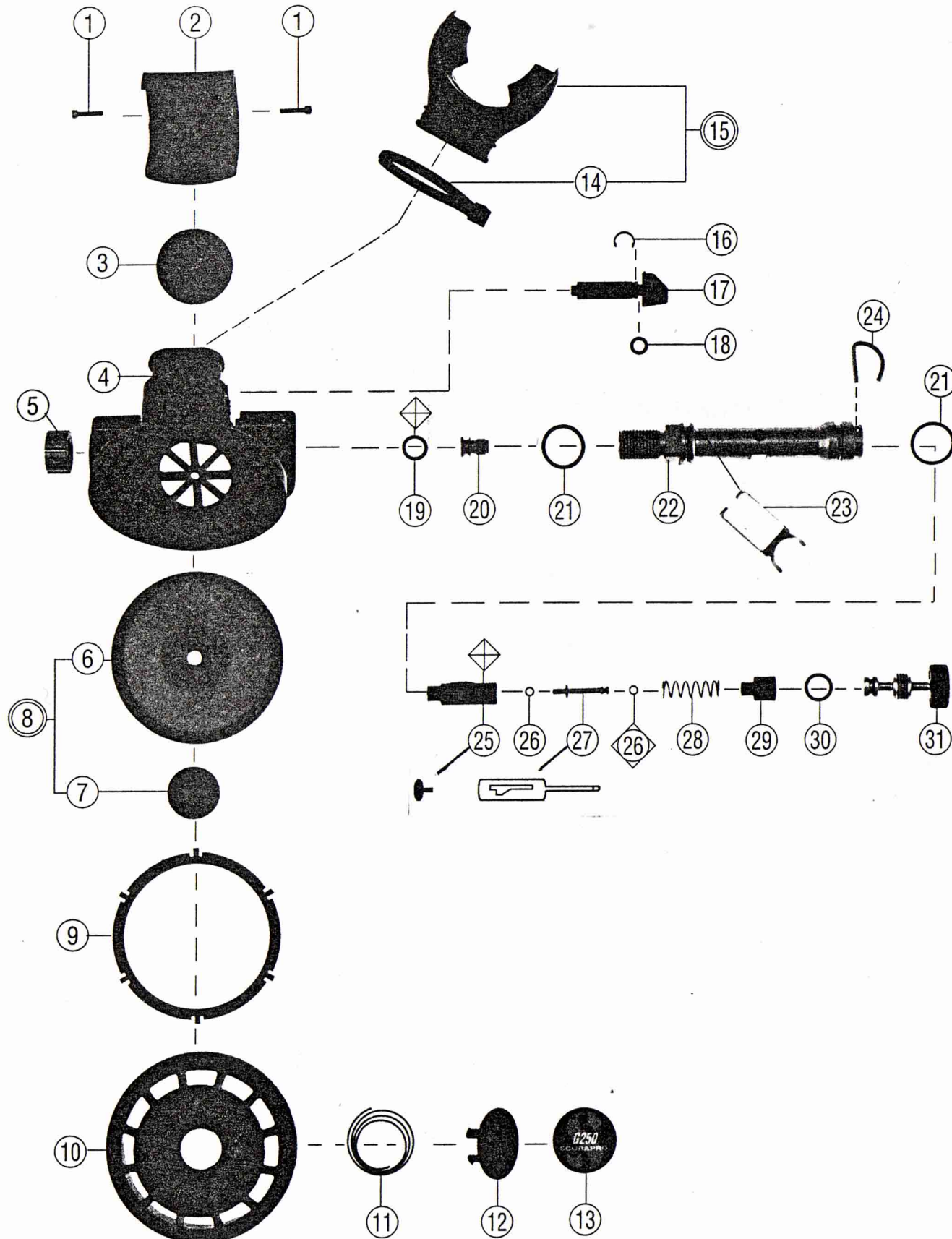
SCUBAPRO

Technical Service Schematic

G250 SECOND STAGE #11-25X-000

Revised 06/98

Annual Repair Parts Kit #11-254-041



SCUBAPRO

Technical Service Schematic

G250 SECOND STAGE #11-25X-000

Revised 06/98

Annual Repair Parts Kit #11-254-041

Parts

#	Qty	Part #	Description
1	2	01-101-128	Screw, Cap, Socket Head (USA)
	1	11-190-106	Pin, Exhaust Cover (Euro)
2	1	11-250-023	Cover, Exhaust (USA)
	1	11-300-024	Cover, Exhaust (Euro)
	1	11-256-024	Cover, Exhaust, Clear, (Euro)
3	1	11-250-103	Valve, Exhaust
4	1	11-250-200	Case (USA)
	1	11-400-025	Case (Euro)
	1	11-256-022	Case, Clear (Euro)
*	1	01-075-131	Pin, Cover Retaining (Euro)
5	1	11-250-106	Nut, Jam
6	1	11-109-124	Diaphragm (USA)
7	1	11-109-123	Disc, Diaphragm (USA, old Euro)
8	1	11-109-011	Diaphragm Assembly (USA)
	1	11-300-008	Diaphragm Assembly (Euro)
	1	11-256-008	Diaphragm Assembly, Clear, (Euro)
9	1	11-190-117	Spacer Ring
10	1	11-250-201	Cover, Front (USA)
	1	11-250-212	Cover, Front, Black (Euro)
	1	11-256-023	Cover, Front, Clear (Euro)
11	1	01-020-110	Spring, Purge
12	1	11-250-110	Purge Button (USA)
	1	11-300-035	Purge Button, Anti-set (Euro)
13	1	01-006-036	Decal, G-250, Blue (USA)
	1	01-006-760	Decal, 'S', Blue
14	1		Mouthpiece Strap (USA)
	1	01-040-024	Quick Release Mouthpiece Clip (Euro)
15	1	01-040-001	Mouthpiece
16	1	01-073-250	Retainer, Flow Vane, Copper (USA)
17	1	11-250-204	Flow Vane (USA will fit Euro)
	1	11-300-023	Flow Vane (Euro)
18	1	01-050-126	O-Ring, Flow Vane
19	1	*01-050-293	O-Ring, Orifice
20	1	11-500-109	Orifice, Plastic
21	2	01-050-126	O-Ring, Inlet Tube, Red
22	1	11-250-102	Inlet Tube
23	1	11-109-105	Lever
	1	11-250-141	Lever (Euro)
24	1	11-109-121	Retaining Pin, Adjustment Knob
25	1	11-150-003	Poppet Assembly (old configuration)
	1	*11-250-221	Seat (new configuration)
26	1	01-050-399	O-Ring, Stem (old configuration)
27	1	11-150-103	Stem (old configuration)
	1	11-250-220	Poppet (new configuration)
28	1	*01-050-399	O-Ring, Poppet Stem
29	1	01-020-216	Spring, Balanced Poppet
30	1	11-150-102	Balance Chamber
31	1	01-050-138	O-Ring, Adjustment Knob
	1	11-250-009	Knob, Adjustment
			* Annual Replacement
			* Not Shown

Technical Information:

Special Engineering Notes:

Prior to installing the poppet, the orifice item #20 should be backed away from the poppet to avoid damage to the poppet seat.

To install the poppet, install the lever first into the slotted holes of the inlet Item #22. With the housing in the case, hold the housing upright and drop the poppet into the housing so the tabs that project from the poppet are facing towards the mouthpiece. These tabs must engage into the legs of the lever to lift the poppet when the lever is depressed.

The flow vane retaining ring Item #16 has been changed from stainless to copper alloy. The stainless clips should be inspected annually for rust and replaced with the copper clip if rusted.

Lubricate all threads with silicone grease, especially those of the adjustment knob Item #31 to reduce long term corrosion and provide easier disassembly at the next service interval.

Legend (prices subject to change without notice)

- Not Shown ◇ Dynamic O'Ring Replace Annually
- Optional Item ◇ Annual Replacement
- ▲ Limited Warranty [] Torque In Inch Pounds
- Older Configuration * See Note