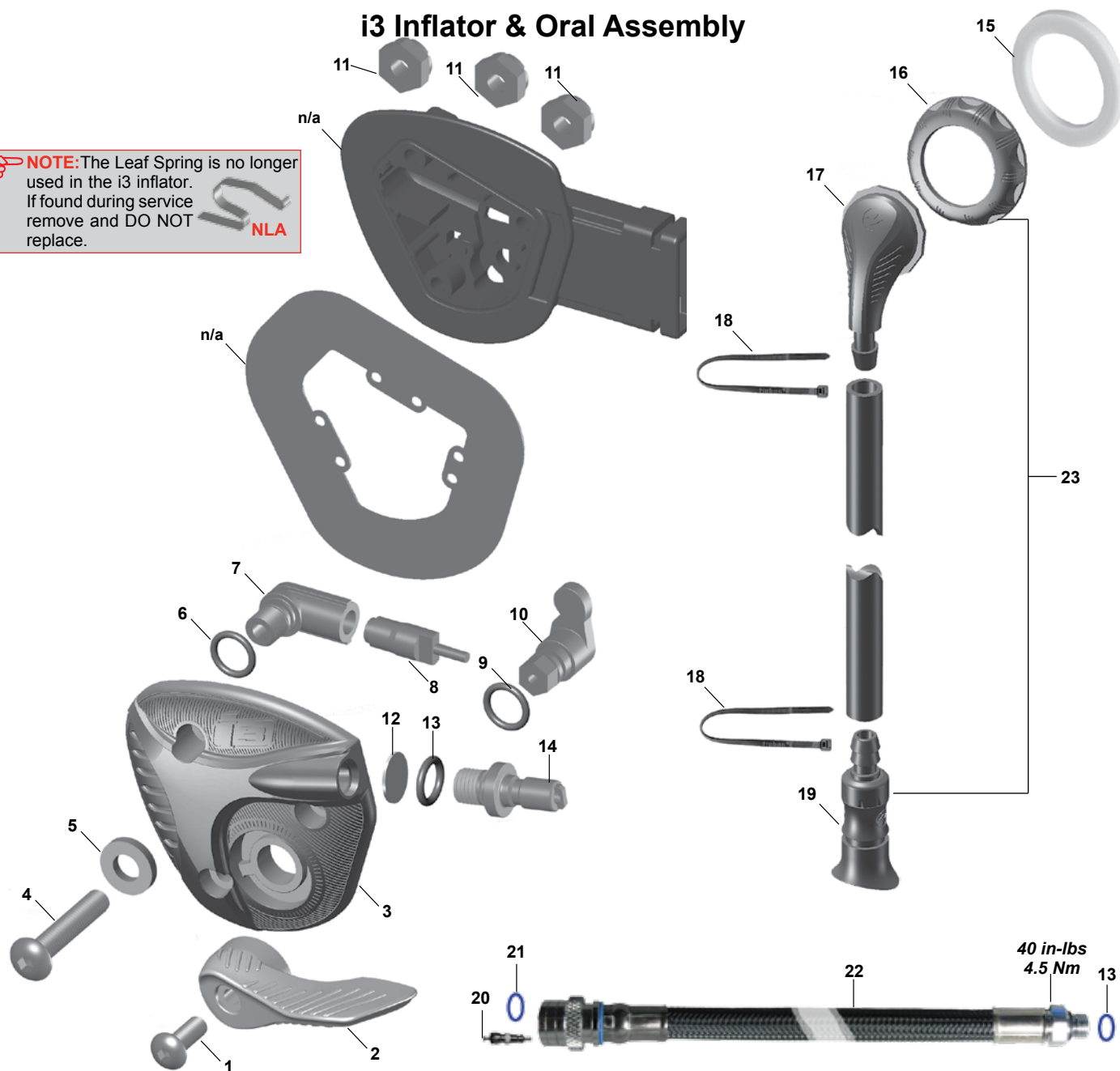


i3 Inflator & Oral Assembly

NOTE: The Leaf Spring is no longer used in the i3 inflator. If found during service remove and DO NOT replace.



| Key # | Part # | Description | Key # | Part # | Description |
|---------|----------------|---------------------------------|---------|----------------|--|
| ----- | 900020 | Service Kit, i3 Inflator | 11 ---- | 15425 | Nut, Nylock, 10-32 |
| 1 ---- | 15424 | Screw, 10-32X.5 | 12 ---- | 15628 | Powerline Filter |
| 2 ---- | 15414 | Handle, i3 Inflator, Red | 13 ---- | 820011P | O-ring (25 pk) |
| ----- | 15446 | Handle, i3 Inflator, Twilight | 14 ---- | 090018 | Quick Disconnect Plug with O-ring |
| ----- | 15433 | Handle, i3 Inflator, Pink | 15 ---- | 15309 | Gasket |
| ----- | 15434 | Handle, i3 Inflator, Grey | 16 ---- | 15763 | Collar |
| ----- | 15435 | Handle, i3 Inflator, Aqua | 17 ---- | 15427 | Elbow |
| 3 ---- | 15436 | Body Out with Grey Labels | 18 ---- | 15719 | Clamp |
| ----- | 15439 | Body Out with Black Labels | 19 ---- | 15429 | Mouthpiece/Valve, Oral Inflator Asssy |
| 4 ---- | 15423 | Screw, 10-32X1 | 20 ---- | 778564 | Valve Core |
| 5 ---- | 15426 | Washer, Screw Seal | 21 ---- | 820043P | O-ring (10 pk) |
| 6 ---- | 820010P | O-ring (25 pk) | 22 ---- | 45827 | MP Braided Inflator Hose, 27" (SM) |
| 7 ---- | 15417 | Valve Retainer, Elbow | ----- | 45833 | MP Braided Inflator Hose, 33" (M, ML, L) |
| 8 ---- | 15504 | Valve Core | ----- | 45836 | MP Braided Inflator Hose, 36" (XL) |
| 9 ---- | 15445P | Quad-ring (10 pk) | ----- | 45840 | MP Braided Inflator Hose, 40" (XXL) |
| 10 ---- | 15415 | Lever, i3 Inflator | 23 ---- | 42773 | i3 Oral Inflator, Complete (items 16-19) |

Part numbers in **BOLD ITALICS** indicate standard overhaul replacement part.