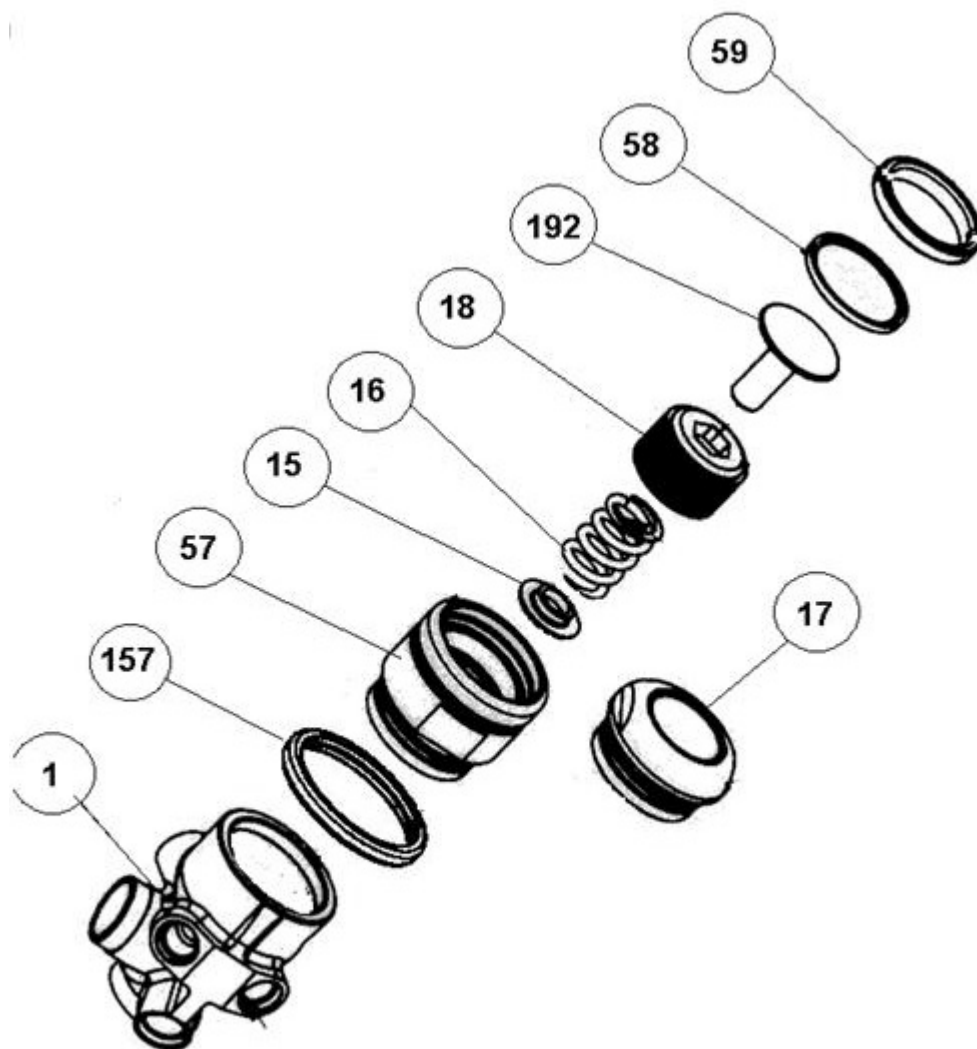


## HOW TO INSTALL DRY CWD KIT



RIF.N.	CODE	DISCRIPTION	RIF.N.	CODE	DISCRIPTION
1	---	1 <sup>ST</sup> STAGE BODY	57	46200557	DRY CWD BODY
15	46200582	SPRING PLATE BASE	58	46200558	DIAPHRAGM FOR DRY CWD
16	46185023	DIAPHRAGM SPRING 1 <sup>ST</sup> STAGE REG.	59	46200556	LOCK NUT FOR DRY CWD
17	46200544	RETAINING NUT	157	46200554	1 <sup>STG</sup> ANTISHOCK RING
18	46185028	REGULATING NUT	192	46200555	DRY CWD PISTION