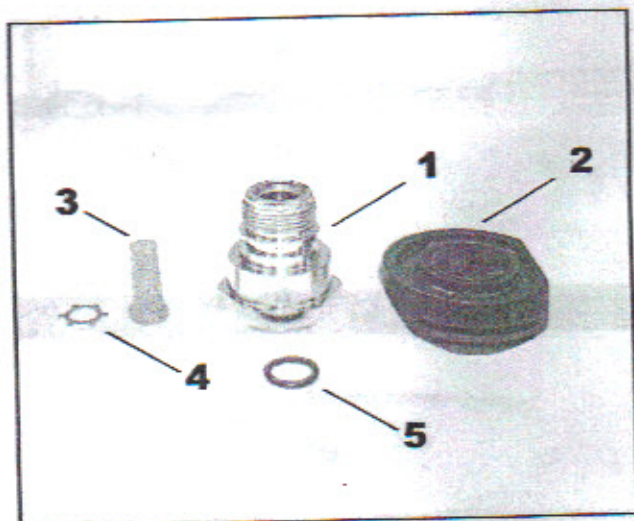




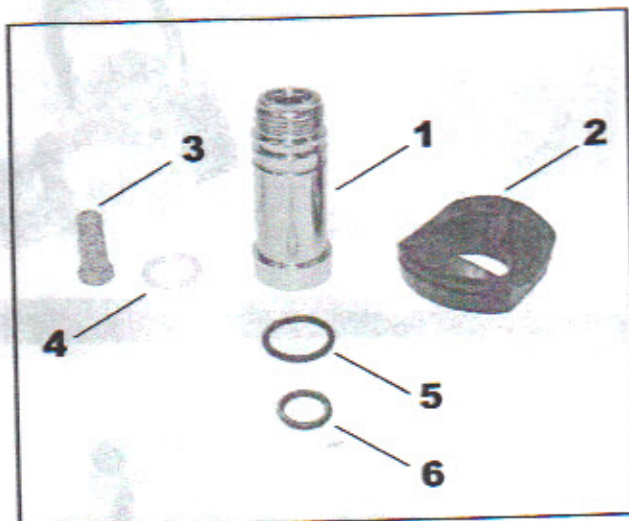
MK20 Yoke/DIN Retainer Bulletin

Yoke Retainer Update Kit PN 10.752.015



- 1) 10.103.115 Yoke Retainer
- 2) 10.600.111 Saddle
- 3) 01.028.109 Conical Filter
- 4) 01.073.101 Retainer
- 5) 01.050.138 O-Ring

DIN Retainer Update Kit PN 10.752.315



- 1) 10.400.126 Knob Retainer
- 2) 10.600.111 Saddle
- 3) 01.028.109 Conical Filter
- 4) 01.050.428 O-Ring
- 5) 01.050.347 O-Ring
- 6) 01.050.138 O-Ring



Figure 1



Figure 2

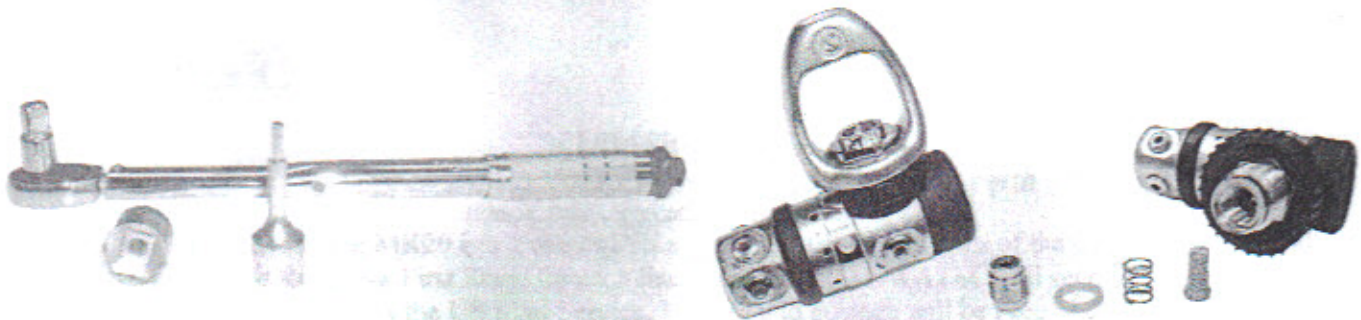


Figure 3

You will notice the addition of a shoulder on both the Yoke and DIN retainers (fig. 1&3). This shoulder prevents the "bottoming out" stress placed on the body caused by over torque of the retainer. The kit will also include a new saddle. This will help you identify that the update has been completed (fig. 2). The new saddle is flat on one side and has two vents rather than three.



Yoke/DIN Retainer Replacement Procedures



Please note: This procedure should be performed by an Authorized SCUBAPRO UWATEC Dealer

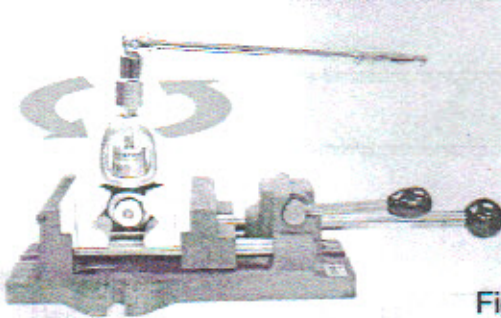


Figure 4

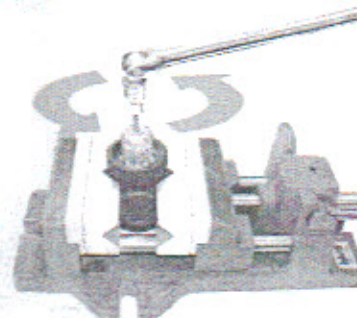


Figure 5

- 1) Remove yoke screw. With the first stage body stabilized in a bench vice with soft jaws, use the 1" yoke nut socket, a 3" long x 3/8" drive extension and breaker bar to loosen and remove the yoke retainer (fig. 4). The DIN assembly is loosened and torqued using a 6mm hex key socket (fig. 5).

266 inch pounds

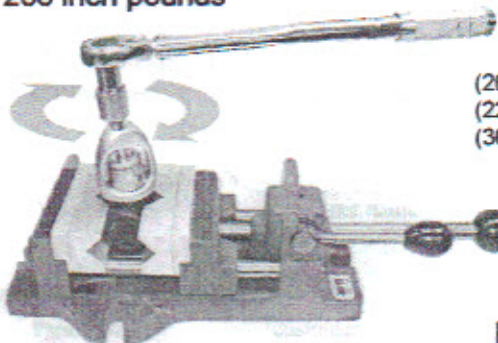


Figure 6

266 inch pounds

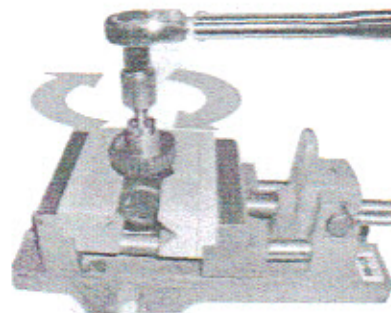


Figure 7

- 2) Replace the filter, retainer and o-ring with the new one supplied in the kit, install the new Yoke / DIN retainer into the Yoke / Knob and attach it to the body. Place the first stage in a bench vice with soft jaws, insert the 3" long x 3/8" drive extension through the yoke screw hole into the socket (fig. 6 and 7). Using the torque wrench, tighten the Yoke / DIN retainer to the specified torque (266 inch pound-force or 22 foot pound-force). Re-install yoke screw.

If you have any questions please contact Tech Services at (800) 382 2211



SCUBAPRO UWATEC
MK20 Yoke / DIN Retainer FAX Order Form

(Please make copies of this form for future use)

Please circle whether the MK20 is a Yoke or DIN and legibly fill in the Name of the Customer and Serial Number of the Regulator First Stage for each line. SCUBAPRO UWATEC will send the appropriate Retainer kit via the US Mail Service. The kits and postage will be Free of charge.

(Please allow two days for processing)

Dealer Name _____

Dealer Number _____

Phone Number _____

MK20 Yoke or DIN _____
Please circle customer name serial number

MK20 Yoke or DIN _____
Please circle customer name serial number

MK20 Yoke or DIN _____
Please circle customer name serial number

MK20 Yoke or DIN _____
Please circle customer name serial number

MK20 Yoke or DIN _____
Please circle customer name serial number

MK20 Yoke or DIN _____
Please circle customer name serial number

Please fax this form to SCUBAPRO UWATEC

800-213-0740 or 619-402-1554

Phone orders will not be accepted

1166 Fesler Street, El Cajon, CA 92020 • 619-402-1023 phone • 619-402-1554 fax

www.scubapro-uwatec.com



UWATEC

Dear Authorized SCUBAPRO UWATEC Dealer,

October 2005

A number of our dealers have expressed their desire to have the MK20 Yoke Retainer Kits on hand when customers come in for upgrade or service. Our stock levels are now sufficient to send you three kits to have on hand when your customers come in for service or upgrade. We ask that you continue to use the enclosed fax form to replace your stock and to have units on hand to best serve your customers.

SCUBAPRO UWATEC Tech Services Dept.

1166 Fesler Street, El Cajon, CA 92020 • 619-402-1023 phone • 619-402-1554 fax
www.scubapro-uwatec.com