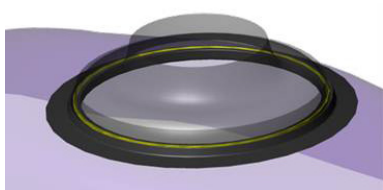


Place the drysuit with mounted neck ring on a flat hard surface.
(Note: avoid bending the zipper.)

Place the neck seal and spanner ring in the tapered groove of the neck ring.

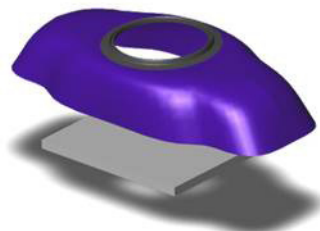
Use the installation tool and press the spanner ring down until you feel it lock into the neck ring groove.



Test the attachment strength by pulling the neck seal.

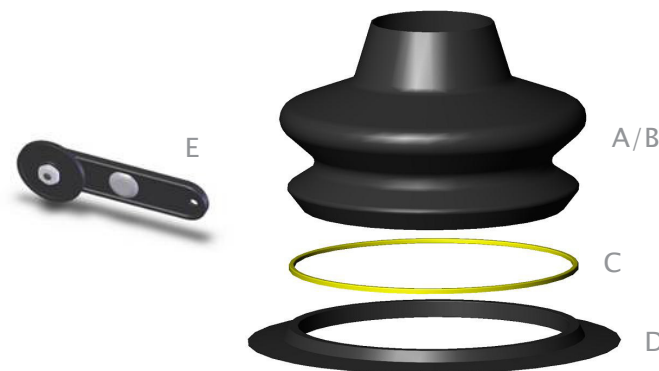


A leakage check at shallow depth and with the assistance of another diver is strongly recommended. A redundant buoyancy device (e.g. BCD) should always be used when diving. Only use SI TECH Neck Tite neck seals and original parts with the SI TECH Neck Tite system.



NECK TITE set

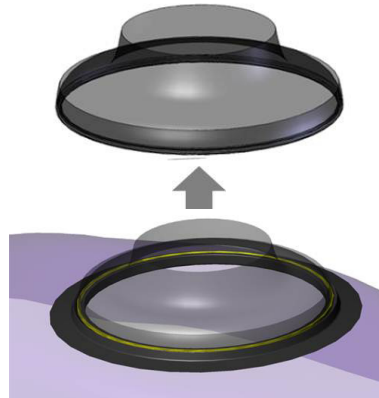
- ☐ 60178 (set with silicone neck seal; B, C, D and E)
- ☐ 60177 (set with latex neck seal; A, C, D and E):
 - ☐ small ☐ medium ☐ large
- A torn neck seal can cost you the best dive of your life. The innovative Neck Tite, installed in your suit, turns the disaster of a torn neck seal into a mere inconvenience, saving you frustration, time and money.
- Revolutionary in simplicity and function – Neck Tite is “the seal solution”.



Parts list:

| | |
|--------------------------------------|-------|
| A Neck seal; latex (S, M or L) 61655 | 1 pcs |
| B Neck seal; silicone 61630 | 1 pcs |
| C Spanner ring 60172 | 1 pcs |
| D Neck ring 60176 | 1 pcs |
| E Installation tool 60160 | 1 pcs |

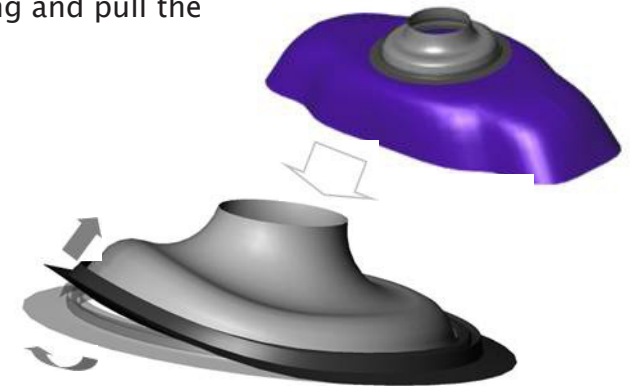
- Easy and low cost installation.
- Ease of exchange and maintenance.
- A Neck Tite seal can be fitted in minutes, without using any glue.
- Exceptionally strong and flexible sealing joint between seal and ring.
- The very small diameter Neck Ring minimizes discomfort and interference with the BCD or harness.
- The neck ring is flexible and has no sharp edges.
- SI TECH Neck Tite neck seals, with an extra thin and comfortable sealing, are available in three sizes in latex and one size in silicone.



The neck ring can be fitted to either the inside or the outside of the suit.



Removing a neck seal
Bend the neck ring and pull the neck seal out.



Installation and gluing

The recommended glue for attaching the Neck Tite neck ring is a PU-based adhesive. Recommendations on adhesive types, solvents and installation to the suit material must come from your suit manufacturer or an authorized suit repair facility.

If preferred, the neck ring can be curved from its original flat shape by heating to 150 degrees C (300 F) for 20 minutes and placed over a tube diameter 200 mm (8") until cool. This must be done before gluing.

Installing a neck ring

Buff surface to be glued to a rough finish. Either side of the neck ring can be attached to the suit.



Replacing a neck seal
Fit the neck seal around the spanner ring as shown.

