

## Product Features Matrix

Air Integrated	Warranty	Gases	Model	Algos	Display	Nav	Compass	Log capacity	Battery Type	User Replaceable
Yes	2-year limited	1	D4i Novo	Suunto RGBM	BW	4 button	no	140 hrs	CR2450	yes
No	2-year limited	2	Smart	RGBM Mares-Weinke	BW	2 button	no	35 hrs	CR2430	yes
Yes	2-year limited	4	Oci	Pelagic DSAT or Z+	BW	4 button	yes	24 dives	CR2450	yes
Yes	2-year limited	2	Amphos Air	DSAT (modified Haldanean)	BW	4 button	no	24 dives	CR2430	yes
No	2 year	2	IQ-1201 Talis	Buhlmann ZNL 16C	BW	4 button	no	24 dives	CR2430	yes
No	2 year	1	Chromis	Custom (ZHL8 ADT MB)	BW	4 button	no	not stated	CR2430	yes
Yes	2-year	4	A300 CS	Pelagic DSAT and Z+	Color	3 button	yes	24 dives	CR2	yes
No	2-year	1	Leonardo	Modified Haldane and Weinke	BW	1 button	no	60 dives/75 hrs	CR2430	yes
Yes	2-year limited	3	Icon HD	RGBM Mares-Weinke	Color	4 button	yes	100 hrs	lithium rechargeable	no
Yes	2-year	3	Lynx	Buhlmann	Color	Tap	yes	up to 1,500 hrs	lithium	yes
No	2 year	2	Aladin Square	ZHL8 ADT MB	BW	2 button	no	100 hrs	CR2450	yes
Yes, hose	1 year	6	Cobalt 2	RGBM	Color	4 button	yes	100 dive hrs	lithium rechargeable	no
Yes, hose	2 year	3	ProPlus 3	Pelagic DSAT or Z+	BW	2 button	no	50 dives	CR2	yes

## Ergo Test Scores / Wristwatch

Mfr	Model	Type	Reading screen	Understanding screen data	Accessing alt screen	Hearing warnings	Backlight	Safety stop	Accessing after dive
Suunto	D4i Novo	WW	4	3	3	3	3	4	4
Mares	Smart	WW	4	4	4	4	3	4	3
Oceanic	Oci	WW	4	4	3	4	4	4	4
Sherwood	Amphos Air	WW	4	3	3	3	3	4	3
Tusa	IQ-1201 Talis	WW	4	3	3	3	3	4	3
Scubapro	Chromis	WW	4	3	3	3	2	3	2

5=excellent; 4=very good; 3=good; 2=fair; 1=poor

## Ergo Test Scores / Wristmount

Mfr	Model	Type	Reading screen	Understanding screen data	Access/understand alt screen	Audible warnings	Backlight/scrn illum	Safety stop	Access/present after dive
Aeris	A300 CS	WM	5	4	4	4	5	4	4
Cressi	Leonardo	WM	4	4	4	3	2	3	2
Mares	Icon HD	WM	5	5	5	5	5	5	5
Liquivision	Lynx	WM	5	4	3	3	5	3	4
Scubapro	Aladin Square	WM	4	4	4	2	4	3	2
Oceanic	ProPlus 13	Con	5	5	5	4	4	4	4

5=excellent; 4=very good; 3=good; 2=fair; 1=poor

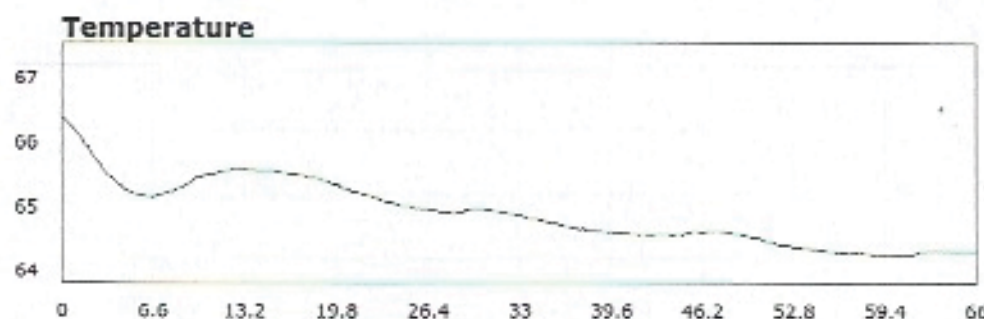
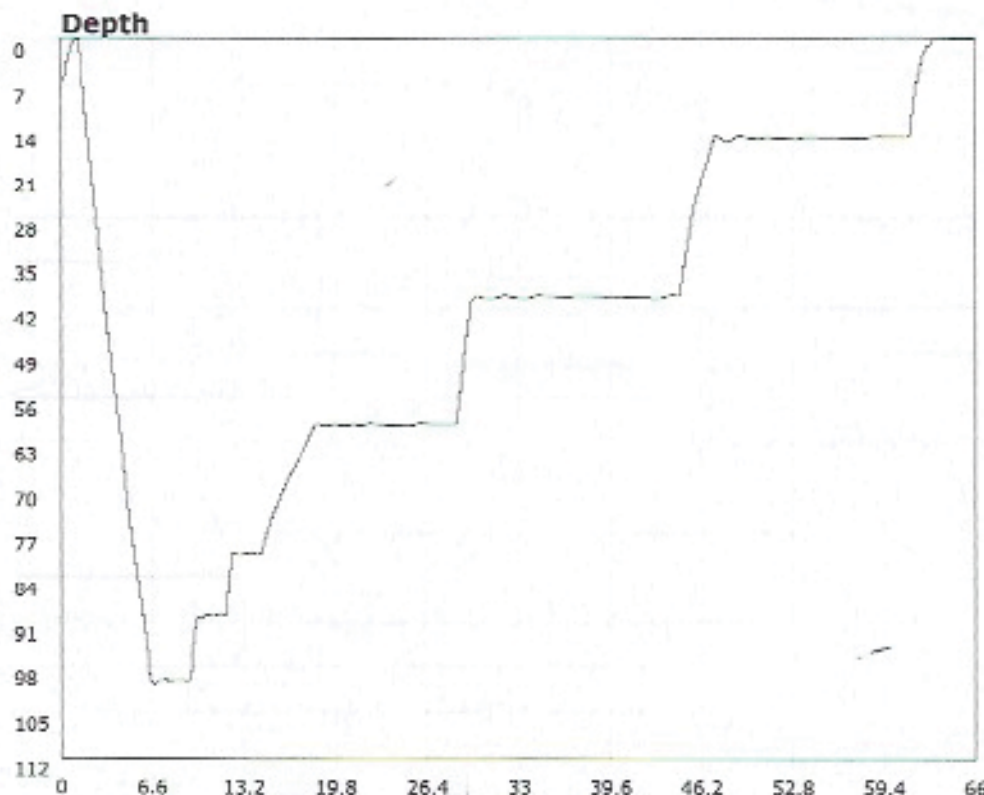
Dive 1	Computer	100'; 8 min	90'; 11 min	80'; 13 min	60'; 27 min	40'; 44 min	15'; 60 min
Suunto	D4i Novo	11	12	15	16	35	SS; >60 min
Mares	Smart	12	10	12	9	20	SS; >60 min
Oceanic	OCi (PZ+)	9	10	12	15	33	SS; >60 min
Sherwood Scuba	Amphos Air	14	16	17	24	74	SS; >60 min
Tusa	IQ-1201 Talis	10	9	12	15	33	SS; >60 min
Scubapro	Chromis	NR	NR	NR	NR	NR	SS; >60 min
Aeris	A300 CS	13	14	17	24	68	SS; >60 min
Cressi	Leonardo	9	10	10	15	29	SS; >60 min
Mares	Icon HD	9	9	11	7	16	SS; >60 min
Liquivision	Lynx	NR	NR	NR	NR	NR	SS; >60 min
Scubapro	Aladin Square	NR	NR	NR	NR	NR	SS; >60 min
Atomic Aquatics	Cobalt 2	7	13	17	21	59	SS; >60 min
Oceanic	ProPlus 3 (DSAT)	14	16	18	24	73	SS; >60 min
		NR = Not Recorded					

Dive 2 (Surf=60 min)	Computer	40'; 6 min	60'; 12 min	70'; 18 min	60'; 25 min	40'; 36 min	15'; 43 min
Suunto	D4i Novo	69	24	12	9	13	SS; > 60 min
Mares	Smart	67	26	15	11	10	SS; > 60 min
Oceanic	OCi (PZ+)	70	26	14	11	21	SS; > 60 min
Sherwood Scuba	Amphos Air	96	35	20	20	49	SS; > 60 min
Tusa	IQ-1201 Talis	61	25	14	10	19	SS; > 60 min
Scubapro	Chromis	75	25	13	10	17	SS; > 60 min
Aeris	A300 CS	97	35	19	19	48	SS; > 60 min
Cressi	Leonardo	56	24	12	9	8	SS; > 60 min
Mares	Icon HD	57	23	12	8	7	SS; > 60 min
Liquivision	Lynx	NR	34	20	20	54	SS; > 60 min
Scubapro	Aladin Square	74	24	13	9	16	SS; > 60 min
Atomic Aquatics	Cobalt 2	90	31	18	15	34	SS; > 60 min
Oceanic	ProPlus 3 (DSAT)	97	35	20	20	48	SS; > 60 min

Dive 3 (Surf=120 min)	Computer	80'; 7 min	70'; 12 min	60'; 18 min	50'; 24 min	40'; 36 min	15'; 43 min
Suunto	D4i Novo	23	20	23	23	21	SS; > 60 min
Mares	Smart	19	19	21	21	20	SS; > 60 min
Oceanic	OCi (PZ+)	18	18	20	23	29	SS; > 60 min
Sherwood Scuba	Amphos Air	22	23	29	38	54	SS; > 60 min
Tusa	IQ-1201 Talis	18	17	19	21	29	SS; > 60 min
Scubapro	Chromis	19	19	19	22	27	SS; > 60 min
Aeris	A300 CS	21	23	28	35	53	SS; > 60 min
Cressi	Leonardo	17	15	13	11	2	SS; > 60 min
Mares	Icon HD	18	17	19	19	17	SS; > 60 min
Liquivision	Lynx	20	23	29	39	72	SS; > 60 min
Scubapro	Aladin Square	18	18	19	21	27	SS; > 60 min
Atomic Aquatics	Cobalt 2	23	26	29	36	56	SS; > 60 min
Oceanic	ProPlus 3 (DSAT)	21	23	29	37	54	SS; > 60 min

Dive 4 (Surf=60 min)	Computer	60'; 9 min	40'; 23 min	30'; 29 min	15'; 36 min
Suunto	D4i Novo	22	26	47	SS; > 60 min
Mares	Smart	26	37	79	SS; > 60 min
Oceanic	OCi (PZ+)	26	40	83	SS; > 60 min
Sherwood Scuba	Amphos Air	34	59	64	SS; > 60 min
Tusa	IQ-1201 Talis	25	39	82	SS; > 60 min
Scubapro	Chromis	25	39	99	SS; > 60 min
Aeris	A300 CS	33	58	63	SS; > 60 min
Cressi	Leonardo	11	5	1	SS; > 60 min
Mares	Icon HD	24	32	71	SS; > 60 min
Liquivision	Lynx	36	91	NR	SS; > 60 min
Scubapro	Aladin Square	24	38	96	SS; > 60 min
Atomic Aquatics	Cobalt 2	32	68	60	SS; > 60 min
Oceanic	ProPlus 3 (DSAT)	34	59	62	SS; > 60 min





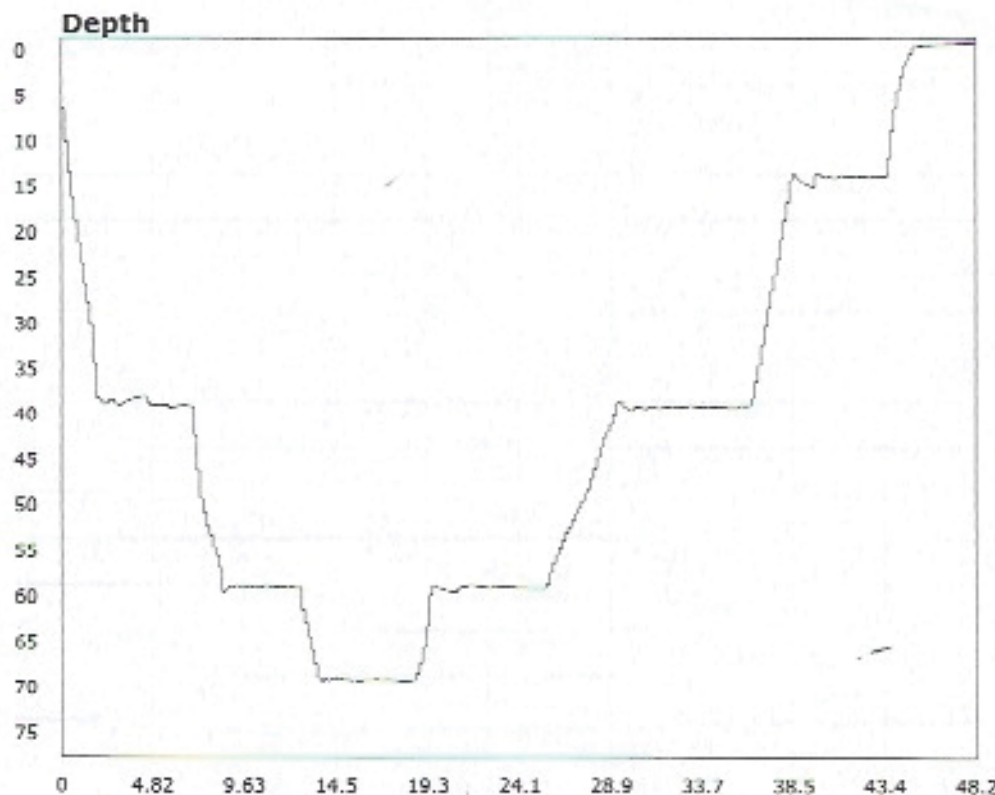
<b>Interval</b>	
10 second(s)	
<b>Time</b>	
01:06:00 B.T.	
01:06:00 B.T.	
>24 hrs S.I.	
<b>Depth</b>	
Avg	43.05 ft 43.05 ft
Max	100.73 ft 100.73 ft
<b>Temperature</b>	
Avg	64.71 °F 64.71 °F
Min	64.06 °F 64.06 °F
<b>Ascent Rate</b>	
26.79 ft/min (max.)	
26.79 ft/min (max.)	
<b>Tank Pressure</b>	
PSI (in)	
PSI (out)	
<b>SAC Rate</b>	
n/a	
<b>Altitude</b>	
0 ft	
<b>Water Type</b>	
Salt Water	

**Site:**

**Buddy:**

**Comments**

**Additional Notes**



## Interval

10 second(s)

## Time

00:48:10 B.T.

00:48:10 B.T.

00:57:00 S.I.

## Depth

Avg 42.26 ft 42.26 ft

Max 70.55 ft 70.55 ft

## Temperature

Avg 65.19 °F 65.19 °F

Min 64.44 °F 64.44 °F

## Ascent Rate

19.80 ft/min (max.)

19.80 ft/min (max.)

## Tank Pressure

PSI (in)

PSI (out)

## SAC Rate

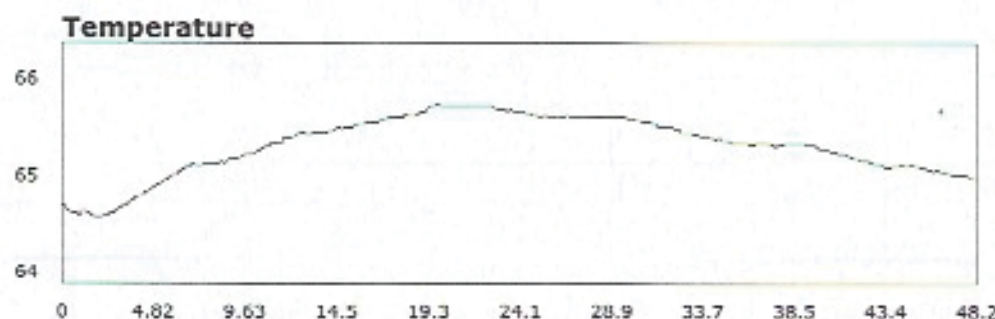
n/a

## Altitude

0 ft

## Water Type

Salt Water

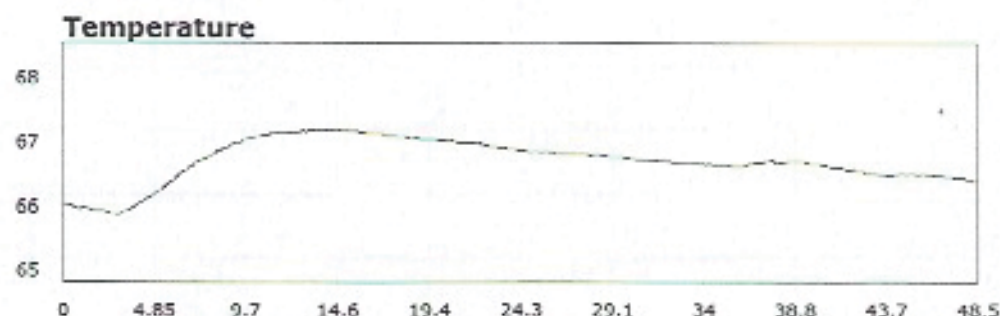
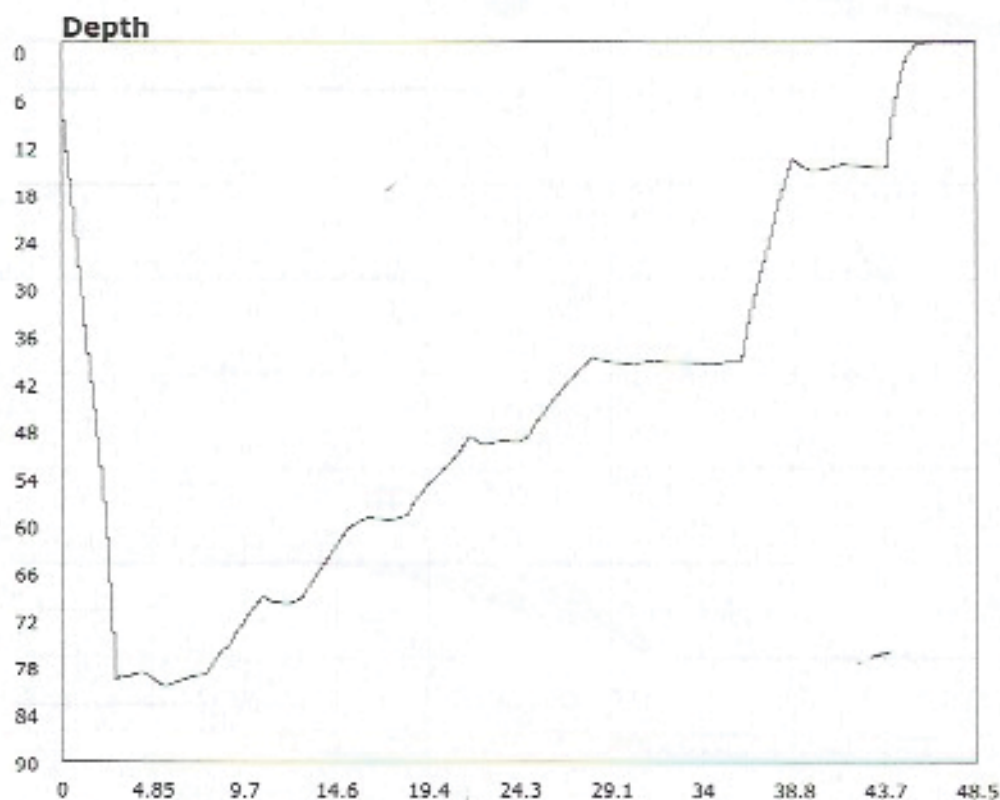


**Site:**

**Buddy:**

**Comments**

**Additional Notes**



## Interval

10 second(s)

## Time

00:48:30 B.T.

00:48:30 B.T.

01:57:20 S.I.

## Depth

Avg 45.25 ft 45.25 ft

Max 81.55 ft 81.55 ft

## Temperature

Avg 66.52 °F 66.52 °F

Min 65.68 °F 65.68 °F

## Ascent Rate

20.57 ft/min (max.)

20.57 ft/min (max.)

## Tank Pressure

PSI (in)

PSI (out)

## SAC Rate

n/a

## Altitude

0 ft

## Water Type

Salt Water

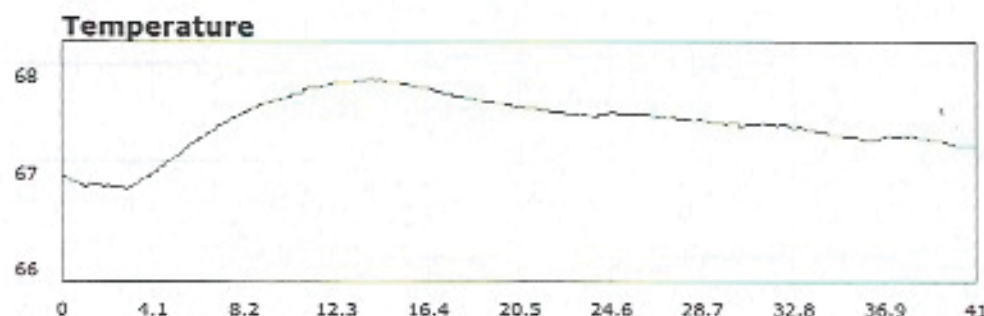
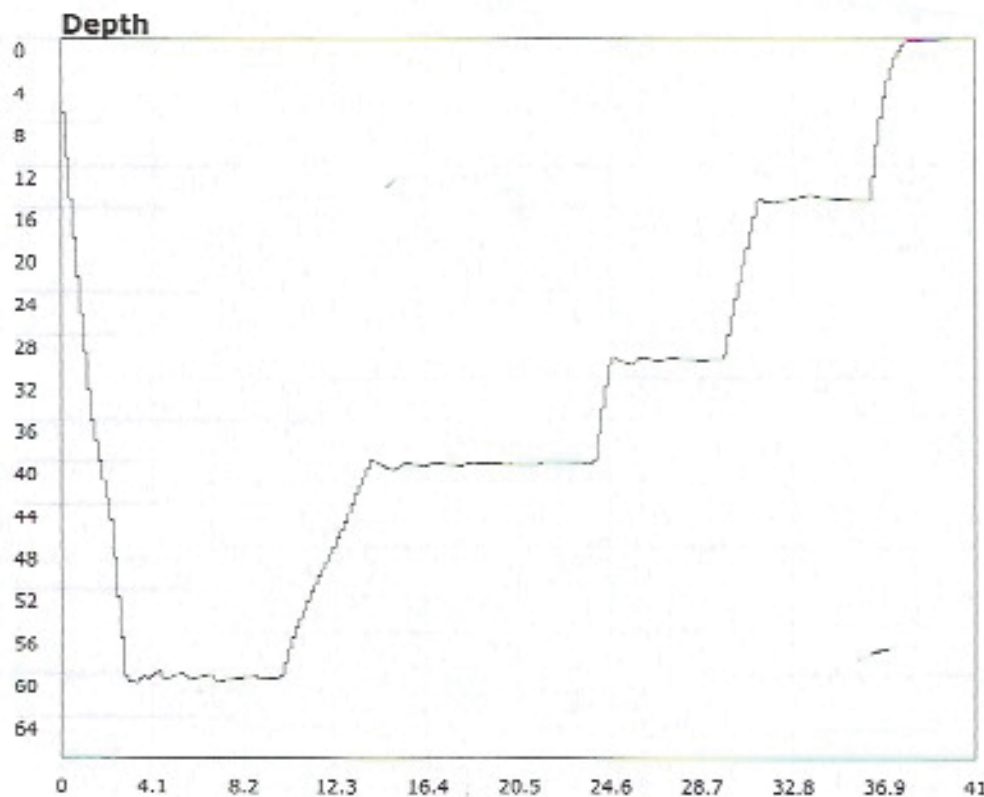
Site:

Buddy:

Comments

Additional Notes





## Interval

10 second(s)

## Time

00:41:00 B.T.

00:41:00 B.T.

00:57:00 S.I.

## Depth

Avg 34.61 ft 34.61 ft

Max 60.78 ft 60.78 ft

## Temperature

Avg 67.40 °F 67.40 °F

Min 66.72 °F 66.72 °F

## Ascent Rate

18.44 ft/min (max.)

18.44 ft/min (max.)

## Tank Pressure

PSI (in)

PSI (out)

## SAC Rate

n/a

## Altitude

0 ft

## Water Type

Salt Water

Site:

Buddy:

Comments

Additional Notes