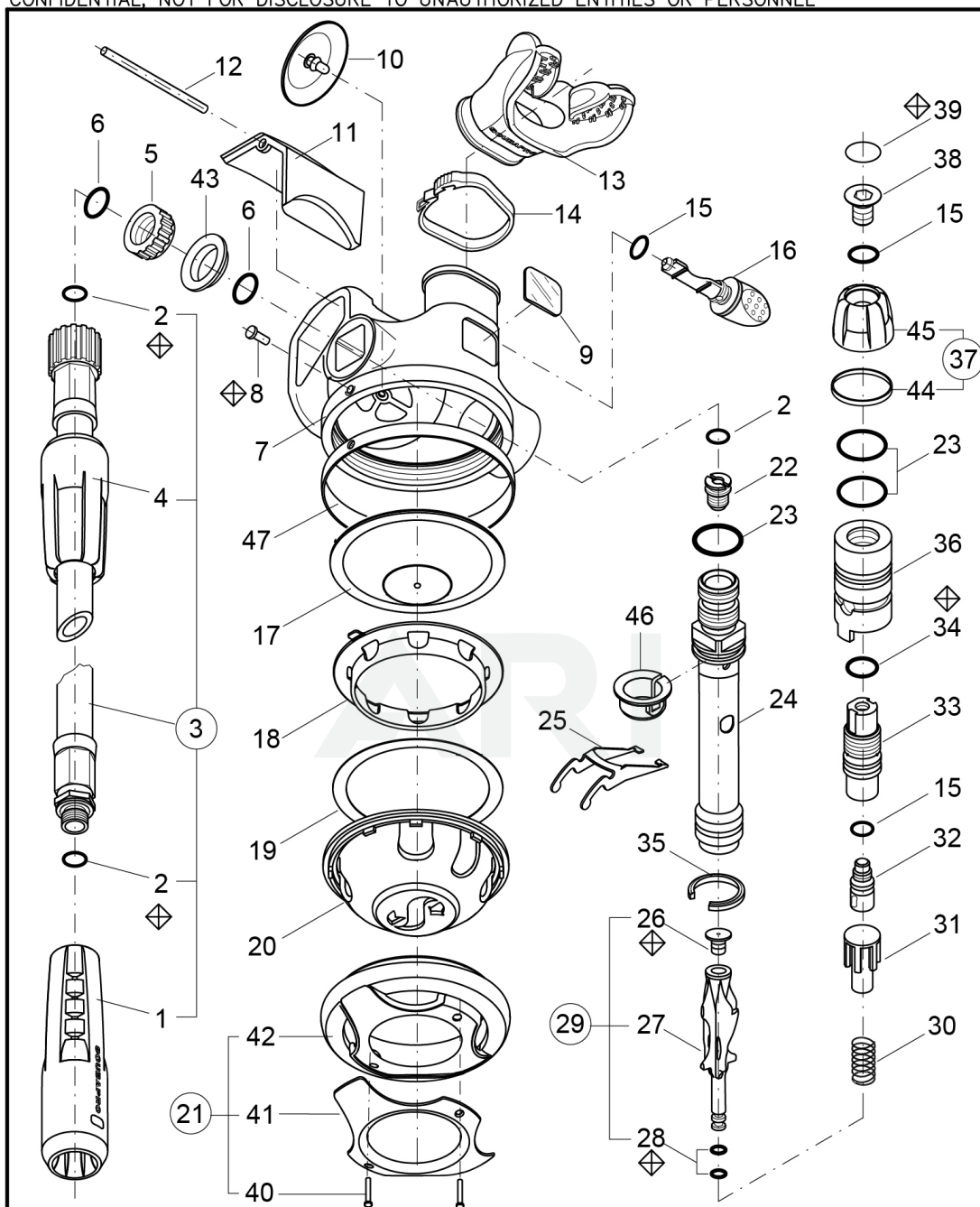


## 11.603.000 REV.- CONF.2 07/2022

CONFIDENTIAL, NOT FOR DISCLOSURE TO UNAUTHORIZED ENTITIES OR PERSONNEL

< > Torque N·m  $\pm 2_{-0.5}$ [ ] Torque lb·in  $\pm 18_{-4.5}$ 

◇ periodical replacement

CAT. NO. 11.603.000

ID 1381

S600 SECOND STAGE

Config. 2 07/2022

Rev.-

06/2012

sheet 1 / 1

Mod. pos.3, pos.4 (were P/N 01309037, 11602040)

Page design © 2004-2022 by ARI Network Services, Inc.

11.603.000 REV.- CONF.2 07/2022

Ref Number	Part Number	Part Description	Context Notes	Quantity
	11.254.045	SERVICE KT S600/T - G250/HP - S550 - S555 -S560 - S360 - G500 - G200B - BAL. ADJ.		
1	11.700.010	PROT. SLEEVE BLACK		
2	01.050.132	O-RING	Annual replacement	
3	01.309.040	L.P. HOSE cm. 75		
4	11.332.040	SLEEVE HOSE		
5	11.250.106	NUT, JAM		
6	01.050.347	O-RING		
7	11.600.006P	CASE		
8	01.075.132	PIN, CASE	Annual replacement	
9	01.006.161	DECAL DIVE/PREDIVE		
10	11.250.103P	EXHAUST VALVE		
11	11.600.007	COVER, EXHAUST		
12	11.190.106	PIN, COVER EXHAUST		
13	01.040.162	MOUTHPIECE		
14	01.040.026	CLIP LIGHT		
15	01.050.126	O-RING		
16	11.500.011P	FLOW VANE		
17	11.500.012P	DIAPHRAGM ASSY		
18	11.602.035	WASHER, ANTIFRICTION		
19	11.600.050	RING		
20	11.602.036	PURGE COVER		
21	11.603.041	FRAME / RING ASSY		
22	11.500.109P	ORIFICE		
23	01.050.160	O-RING		
24	11.602.022	HOUSING		

<b>Ref Number</b>	<b>Part Number</b>	<b>Part Description</b>	<b>Context Notes</b>	<b>Quantity</b>
25	11.600.141	LEVER		
26	11.250.221	SEAT	Annual replacement	
27	11.250.220	POPPET		
28	01.050.363	O-RING	Annual replacement	
29	11.250.015	POPPET ASSY		
30	01.020.216	SPRING		
31	11.150.102P	BALANCE CHAMBER		
32	11.600.011	SCREW ADJ.		
33	11.600.004	KNOB STEM		
34	01.050.145	O-RING	Annual replacement	
35	11.500.031	REATAINING CLIP KNOB		
36	11.602.013	GUIDE SLEEVE		
37	11.602.031	KNOB ASSY		
38	11.600.002	SCREW		
39	01.006.719	DECAL, KNOB	Annual replacement	
40	30.012.103	PIN		
41	11.602.038	FRAME		
42	11.603.137	RING		
43	11.602.009	RING		
44	11.602.012	RING		
45	11.602.003	KNOB		
46	11.500.024	SLEEVE		
47	11.603.009	CASE RING		