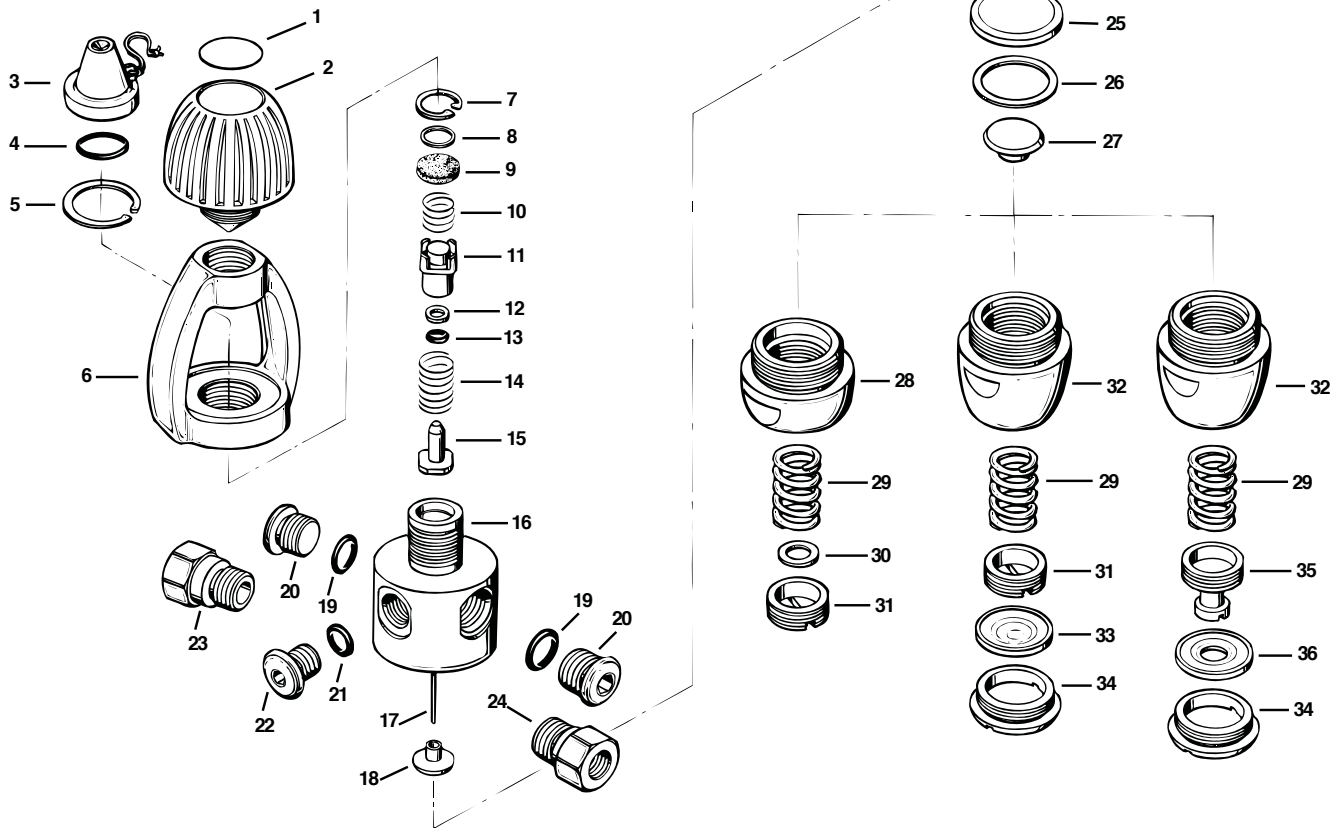


First-Stage Regulators

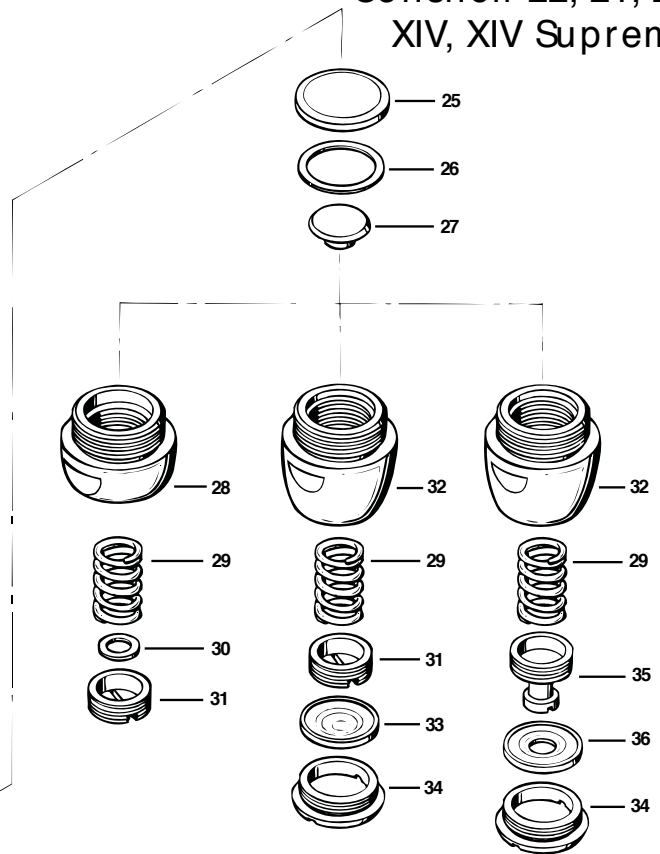
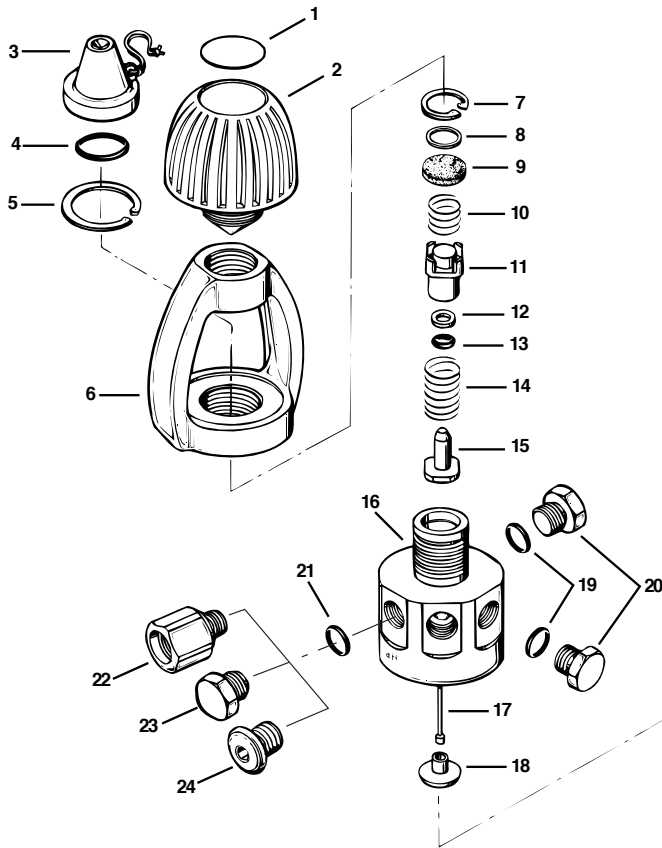
Conshelf SE3, SE2,
SE3 & SE2 Supreme



Key #	Part #	Description	Key #	Part #	Description
----	100361	First-Stage, SE3 (w/ fixed crown)	24 ----	NLA	Adapter, LP, 3/8" Fem. to 1/2" Male
----	900001	Overhaul Parts Kit	25 ---- 103429	Diaphragm	
----	107495	Overhaul Parts Kit, Milit. SE2 (1st & 2nd)	26 ---- 821026	Thrust Washer	
1 ----	100388	Decal	27 ----	101728	Spring Pad
2 ----	107506	Yoke Screw	28 ----	105926	Spring Retainer (fine thread)
3 ----	101012	Dust Cap	----	105326	Spring Retainer (coarse thread)
4 ---- 820120	O-ring		29 ----	105327	Spring (fine & coarse thread non-Supreme)
5 ----	861068	Retaining Ring	30 ----	845097	Washer, Main Spring (non-supremes only)
6 ----	700418	Yoke	31 ----	106023	Adjustment Screw (fine thread)
7 ---- 863051	Retaining Ring		----	101549	Adjustment Screw (coarse thread)
8 ---- 845095	Washer, Filter		Used on Supreme Models		
9 ---- 105106	Filter		29 ----	105944	Spring (coarse thread Supreme only)
10 ----	104613	Spring	----	105327	Spring (fine thread & EFA Supreme)
11 ----	105324	Spring Block	32 ----	105927	Spring Retainer, Supreme (fine thread)
12 ---- 828005	Back-up Ring		----	108851	Spring Retainer, Supreme (coarse thread)
13 ---- 820080	O-ring		33 ---- 108853	Secondary Diaphragm, Supreme	
14 ----	101504	Spring	34 ----	108854	Diaphragm Retainer, Supreme
15 ---- 105940	HP Seat		n/s ---- 108865	Silicone Fluid, 2 oz.	
16 ----	100312	Body (includes removable crown)	Used Only on Externally Fine Adjustable Supreme		
17 ----	102002	Pin	35 ----	105936	Adjustment Screw, EFA Supreme
18 ----	101569	Pin Support	36 ---- 108852	Secondary Diaphragm, EFA Supreme	
19 ---- 957025	O-ring (1/2" Port)		Part numbers in BOLD ITALICS indicate standard overhaul replacement part.		
----	820011	O-ring (3/8" Port)			
20 ----	102004	Port Plug, Low Pressure, 1/2"			
----	104304	Port Plug, Low Pressure, 3/8"			
21 ---- 957004	O-ring (7/16" HP Port)				
22 ----	102003	Port Plug, High Pressure			
23 ----	102085	Adapter, HP, 3/8" Fem. to 7/16" Male			

First-Stage Regulators

Conshelf 22, 21, 20,
XIV, XIV Supreme



Key #	Part #	Description
----	107700	First-Stage, Conshelf XIV
----	108810	First-Stage, Conshelf XIV Supreme
----	NLA	First-Stage, Conshelf 21& 22
----	NLA	First-Stage, Conshelf 21 & 22 Supreme
----	900001	Overhaul Parts Kit, non-Supreme
----	108195	Overhaul Kit, Milit. Conshelf XIV (1st & 2nd)
1 ----	100388	Decal
2 ----	107506	Yoke Screw
3 ----	101012	Dust Cap
4 ----	820120	O-Ring
5 ----	861068	Retaining Ring
6 ----	700418	Yoke
7 ----	863051	Retaining Ring
8 ----	845095	Washer, Filter
9 ----	105106	Filter
10 ----	104613	Spring
11 ----	105324	Spring Block
12 ----	828005	Back-up Ring
13 ----	820080	O-ring
14 ----	101504	Spring
15 ----	105940	Seat
16 ----	105333	Body, Conshelf XIV
----	100712	Body, Conshelf 21&22 (w/removable crown)
17 ----	105323	Pin
18 ----	101727	Pin Support
19 ----	820011	O-ring, 3/8" port
20 ----	910912	Port Plug, LP, Conshelf XIV
----	104304	Port Plug, LP, Conshelf 20, 21, 22
21 ----	957004	O-ring, 7/16" HP Port
----	820011	O-ring, 3/8" HP Port (Con XIV, pre-1998)

Key #	Part #	Description
22 ----	101785	Adapter, HP, 7/16" Fem. to 3/8" Male
23 ----	910912	Port Plug, HP, 3/8" (Con. XIV, pre-1998)
24 ----	102003	Port Plug, HP, 7/16"
25 ----	103429	Diaphragm
26 ----	821026	Thrust Washer
27 ----	101728	Spring Pad
28 ----	105926	Spring Retainer (fine thread)
----	105326	Spring Retainer (coarse thread)
29 ----	105327	Spring
30 ----	845097	Washer, Main Spring (non-supremes only)
31 ----	106023	Adjustment Screw (fine thread)
----	101549	Adjustment Screw (coarse thread)
		Used on Supreme Models
29 ----	105944	Spring (coarse thread Supreme only)
----	105327	Spring (fine thread & EFA Supreme)
32 ----	105927	Spring Retainer (fine thread)
----	108851	Spring Retainer (coarse thread)
33 ----	108853	Secondary Diaphragm
34 ----	108854	Diaphragm Retainer
n/s ----	108865	Silicone Fluid
----	108855	Silicone Fluid (Military Only)
		Used Only on Externally Fine Adjustable Supreme
36 ----	105936	Adjustment Screw, EFA Supreme
37 ----	108852	Secondary Diaphragm, EFA Supreme
n/s ----	108865	Silicone Fluid

Part numbers in **BOLD ITALICS** indicate standard overhaul replacement part.